



LAKE  
WINNIPEG  
FOUNDATION



Assiniboine River; Photo: Paul Mutch

SOURIS RIVER  
WATERSHED DISTRICT

# 2022 regional report

LAKE WINNIPEG  
community-based monitoring network



# Table of Contents

---

Lake Winnipeg Community-Based Monitoring Network: Overview .....	2
Sample Collection & Site Map.....	3
Laboratory & Data Analysis.....	4
LWCBMN By the Numbers - 2022 .....	5
Souris River Watershed District .....	6
Characteristics of the 2022 Field Season.....	6
Manitoba Watershed District Map .....	7
2022 Results – Souris River Summary.....	8
2022 Results – Hotspot Map.....	9
2022 Results – Individual Sites.....	10
Antler River near Melita .....	10
Gainsborough Creek near Lyleton .....	12
Stony Creek near Broomhill.....	14
Graham Creek near Melita .....	16
Souris River at Melita .....	18
Medora Creek near Napinka.....	20
Pipestone Creek near Pipestone.....	22
Plum Creek near Souris .....	24
Sites without capacity for load/export calculation .....	26
Souris River at Souris .....	26
Elgin Creek near Souris .....	27
Souris River near Minot .....	28
Whitewater Lake near Boissevain .....	29
Turtlehead Creek at Deloraine Reservoir.....	30
Incremental Calculations.....	31
Souris River at Melita .....	31
Plum Creek near Souris .....	32
Map Sources.....	33

Drainage area polygons .....	33
Map layers .....	33

# Lake Winnipeg Community-Based Monitoring Network: Overview

---

The Lake Winnipeg Community-Based Monitoring Network (LWCBMN), coordinated by the Lake Winnipeg Foundation (LWF), mobilizes citizens and watershed partners to collect water samples across Manitoba in order to measure phosphorus concentration. Phosphorus is the nutrient responsible for blue-green algae blooms on Lake Winnipeg. Phosphorus comes from diverse sources across the watershed, including municipal wastewater and agricultural runoff.

Different sub-watersheds contribute different proportions of Lake Winnipeg’s total phosphorus load. With the help of a strong network of watershed partners and citizen scientists, this long-term monitoring program is identifying phosphorus hotspots – localized areas that contribute higher amounts of phosphorus to waterways than other areas. Targeting actions to reduce phosphorus loading in hotspots will reduce the amount of phosphorus entering Manitoba’s lakes and rivers, and improve the health of Lake Winnipeg.

Snow melts, floods and heavy rainfall events are responsible for most of the phosphorus that is flushed from the land and carried into our waterways. LWCBMN samples frequently throughout the season, and particularly during the spring melt, to ensure we capture phosphorus runoff during these high-water events.

Most LWCBMN sampling is conducted at stations where water flow is continuously monitored by the [Water Survey of Canada](#) (WSC). By tracking flow online using the WSC’s real-time data, the network can notify partners and citizen scientists across the watershed to ensure frequent sampling during peak flows. Sampling at these stations provides corresponding real-time flow data, allowing LWCBMN data to be used to calculate **phosphorus loads**. We need several samples throughout the season, corresponding to changes in flow, to accurately calculate these loads. Phosphorus loads can subsequently be used to calculate **phosphorus export**, based on the area of the watershed.

---

**Phosphorus load** is the total amount of phosphorus flowing past a sample site over a given period of time, expressed as tonnes per year.

---



---

**Phosphorus export** is the amount of phosphorus exported by each hectare of land in a year, expressed as kg/ha/y.

---

# Sample Collection & Site Map

Water samples are collected using a weighted sampling device that collects source water directly into a 500 mL Nalgene polyethylene bottle. The sampling device is lowered into the water just before it hits the bottom, the bottle is filled, then brought back to the surface. It is rinsed three times prior to sample collection. Next, a 60 mL Nalgene polyethylene bottle containing 1 mL 4N H<sub>2</sub>SO<sub>4</sub> is filled with whole water from the collection bottle.

In 2022, 1680 unfiltered water samples were collected and analyzed from 116 sites. Of these 116 LWCBMN sampling sites, 92 are located near flow-metered WSC stations, five are located near non-flow-metered WSC stations, four are located near Ontario Power Generation sites, two are located near Manitoba Hydro sites, one is located near a USGS station, and twelve are not located near any stations.

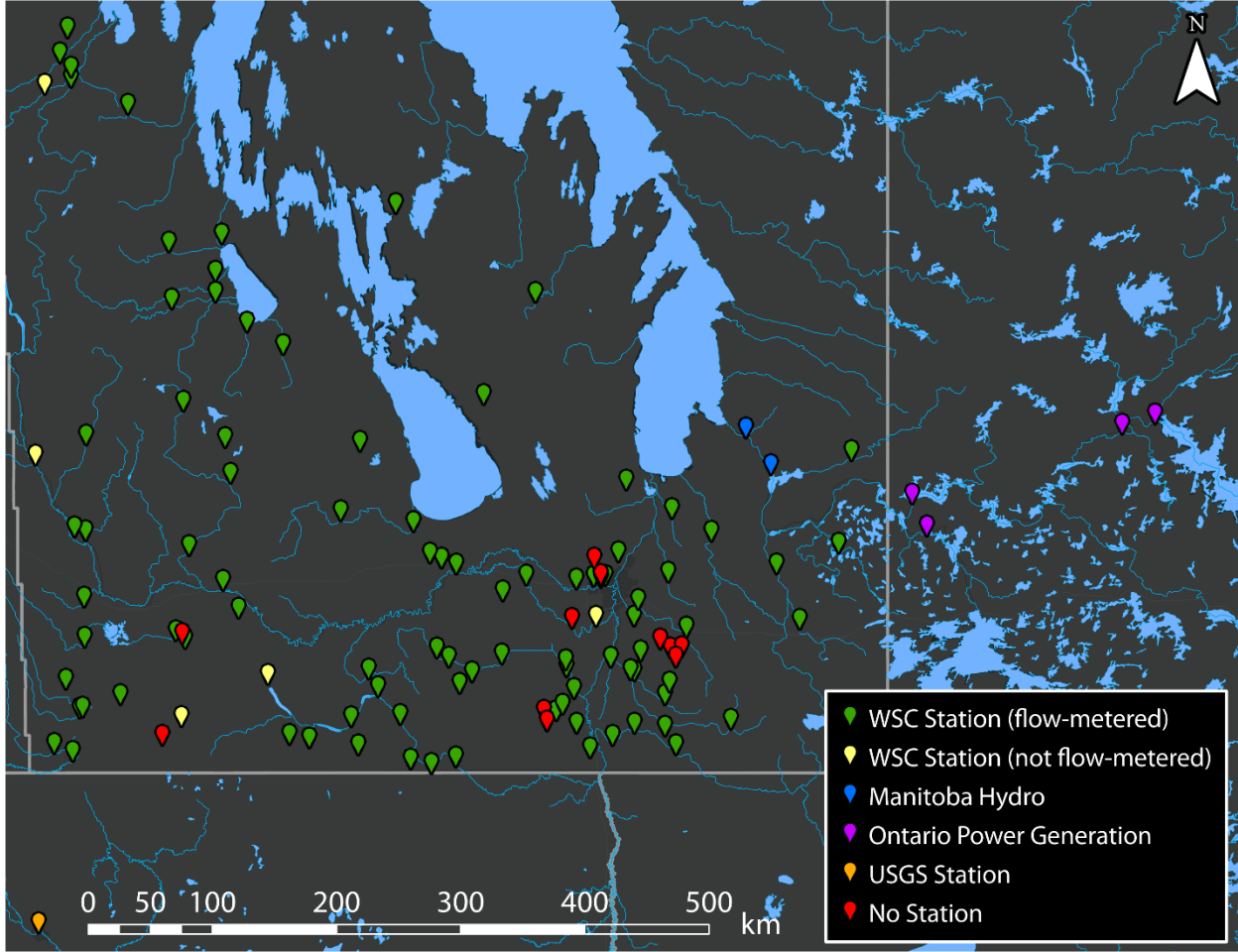


Figure 1: Map of LWCBMN sampling sites in 2022. Locations shown provided at least one sample. Colours indicate nearby station type.

# Laboratory & Data Analysis

---

LWCBMN water samples are analysed for total phosphorus concentration. The analysis of a sample for total phosphorus (TP) is a two-step procedure involving first the chemical digestion/conversion of all P forms to orthophosphate ( $\text{PO}_4^{3-}$ ) followed by the analysis of the concentration of  $\text{PO}_4^{3-}$ . The digestion procedure is patterned after USGS [Water-Resources Investigations Report 03-4174](#). The concentration of  $\text{PO}_4^{3-}$  in the sample was determined following [Murphy & Riley \(1962\)](#). The result of this analytical method is determination of unfiltered total phosphorus in mg/L.

Laboratory analysis on LWCBMN water samples was conducted in partnership with Dr. Nora Casson at her laboratory at the University of Winnipeg. Quality assurance of laboratory methods for the determination of total phosphorus was completed on samples sent from [Proficiency Testing Canada](#). Proficiency testing allows us to assess the quality of our results as compared to the results of other laboratories across the country. We received an excellent passing grade of 92/100 (with anything over 70/100 considered “passing”) on our laboratory analysis method in November 2023.

Our laboratory results provide a record of the phosphorus concentrations for every day that water samples were collected, but we are equally interested in reporting the actual load of phosphorus each year in each watershed that we sample. To create this record, we multiply concentrations by the volume of water that flowed past the station every day. The Water Survey of Canada (WSC) records daily flows at most of our stations. For each station, gaps between concentration observations are filled by linear interpolation to create a continuous daily record. For the WSC flow record before or after the first or last water sample collected, we estimate the missing daily mean concentrations to be equal to the first or last measured concentration, respectively. These measured and estimated daily concentrations are then multiplied by daily flow to create a record of daily phosphorus loads.

Larger watersheds generate greater river flow and typically larger phosphorus loads. Comparing the intensity of phosphorus sources, especially among watersheds of varying sizes, is possible through the calculation of average load exported from each unit area of the watershed. Hence, we also report phosphorus export, which is simply the annual load divided by the watershed area that contributed to this load.

Load and export are each useful in their own way. The export per unit area is indicative of the relative intensity of the sources generating phosphorus export, even among watersheds of different sizes. This is why we display maps of phosphorus export (and not load) in this report. Hotspots identified in these reports export several times more phosphorus per hectare than non-hotspot watersheds. Identifying hotspots can help government agencies to focus phosphorus reduction programs efficiently throughout the Province.

# LWCBMN By the Numbers - 2022

Table 1: Summary of 2022 LWCBMN sampling activity by region.

Region	Number of sites	Number of samples	Site with highest regional total phosphorus (TP) export (kg/ha/y)	Mean % of spring* water load	Mean % of spring* TP load
Assiniboine West	10	170	Little Saskatchewan River near Minnedosa (0.44)	58.63	60.54
Central Assiniboine	2	48	Cypress River near Bruxelles (1.37)	87.85	80.32
City of Winnipeg	5	103	Omand's Creek near Empress Street (1.45)	87.84	91.60
East Interlake	3	24	Netley Creek near Petersfield (0.91)	67.88	81.05
Inter-Mountain	7	110	Ochre River near Ochre River (2.72)	66.73	77.45
Northeast Red	4	34	Devil's Creek near Libau (1.31)	63.71	68.56
Pembina Valley	16	216	Rivière aux Marais near Christie (3.22)	80.87	83.45
Redboine	15	195	South Tobacco Creek near Miami (3.99)	80.86	84.10
Souris River	13	122	Elgin Creek near Souris (0.26)	63.41	54.70
Seine Rat Roseau	19	333	Joubert Creek at St-Pierre-Jolys (2.74)	70.73	74.38
Swan Lake	6	90	Birch River near Birch River (0.83)	79.69	92.88
West Interlake	2	39	Burnt Lake Drain Northwest of Lundar (0.077)	19.56	17.44
Whitemud	4	54	Big Grass River near Glenella (0.78)	59.70	56.13
Winnipeg River	10	142	Winnipeg River at McArthur Generating Station (2.50)	33.44	36.35

\*LWCBMN defines "Spring" as March 1 to May 31, inclusive.

# Souris River Watershed District

---

The Souris River Watershed District (SRWD) is located in south-western Manitoba, and is bordered by Saskatchewan to the west, the United States to the south. A major sub-watershed in SRWD is Plum Creek, which drains Oak Lake, a popular cottage destination that has been experiencing an increase in algae blooms in recent years. In 2020, SRWD expanded to include the eastern portion of the Souris River watershed.

The primary land use in SRWD is agriculture, specifically cropland and grazing land, as well as oil extraction in the north-east portion of the district (West Souris River Integrated Water Management Plan, 2012). In addition to agricultural activities, wastewater treatment plants and lagoons in municipalities throughout SRWD contribute phosphorus to local waterways. Major municipalities include Pipestone, Sifton, Two Borders and Glenwood-Souris.

In partnership with LWCBMN, SRWD staff and volunteers sampled 13 sites in the SRWD region, with 10 of those sites being located near actively monitored WSC flow meters. For the site where flow is not measured, useful information can be drawn from the phosphorus concentrations; however, we cannot calculate the phosphorus load because we cannot multiply the concentration by the volume of water flowing by the site.

[SRWD Website \(srwd.ca\)](http://srwd.ca)

[SRWD Watershed Plans \(srwd.ca/watershed-management\)](http://srwd.ca/watershed-management)

## Characteristics of the 2022 Field Season

---

The 2022 field season was historically wet. The winter of 2021-2022 provided most of southern Manitoba with 150+ cm of snow, the third highest amount of snowfall since 1872. Additionally, record precipitation in April and May saw large amounts of rain and snow falling on mostly frozen, impermeable soils. Specifically, in the month of April, southern Manitoba and the US portion of the Red River watershed received 400-600% of their normal precipitation (120-160 mm). Flooding was a huge issue across the southern part of the province, where almost all LWCBMN sites are located. The mean peak discharge date across all LWCBMN sites with analyzed water samples was May 10, 2022 (with a standard deviation of 19 days). In 2022, an average of 65.83% of stream discharge occurred in the spring (March 1 – May 31) across LWCBMN sites (with a standard deviation of 21.10%). During the period of extreme flooding, safety concerns prevented sampling from occurring at some sites. As a result, some load/export calculations may be less accurate than they would be had sampling remaining frequent during these times.

# Manitoba Watershed District Map

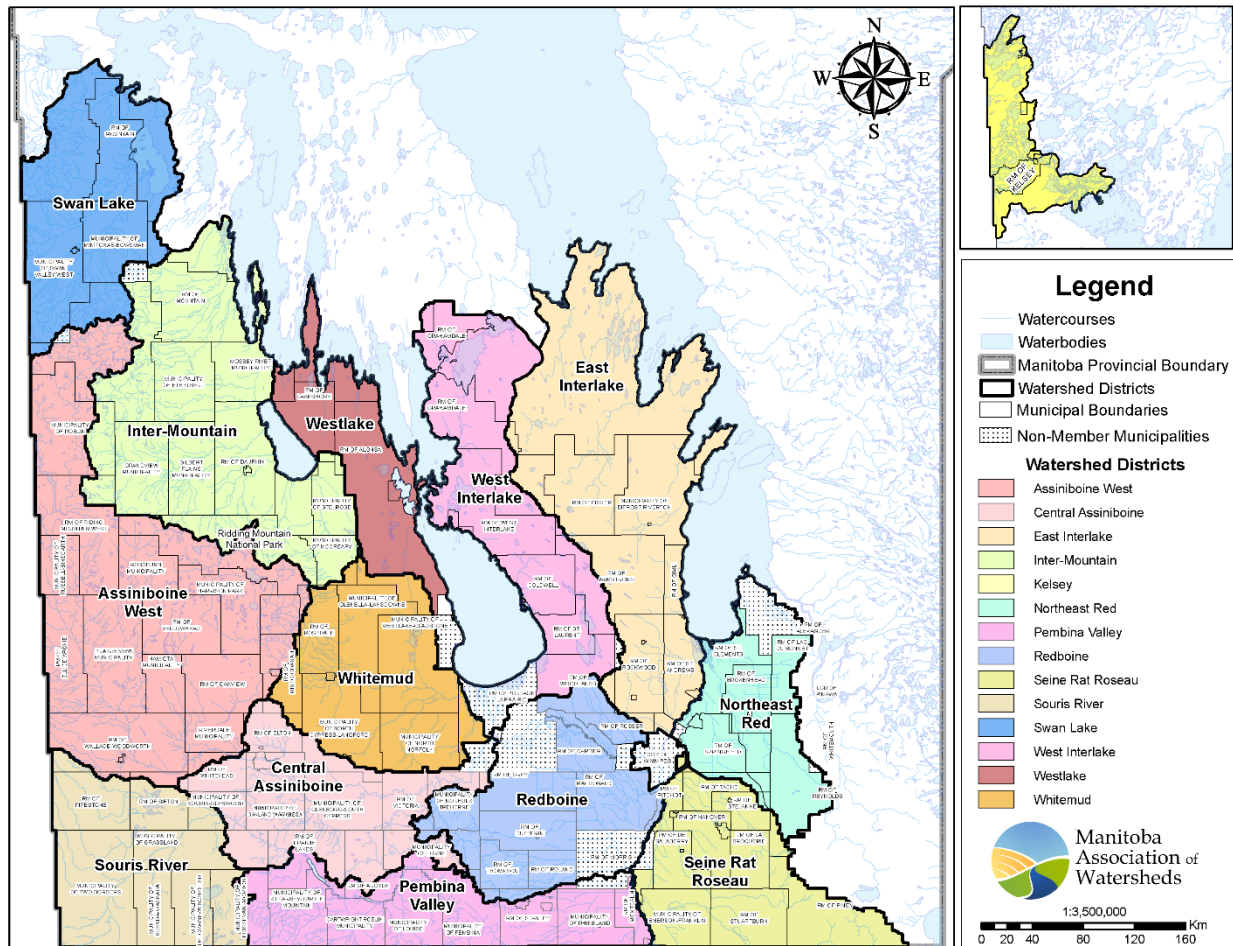


Figure 2: Manitoba Watershed District Boundaries. There are 14 total watershed districts, with 12 of 14 participating in LWCBMN (all but Kelsey & Westlake). Map provided by Manitoba Association of Watersheds (updated July 2022).

# 2022 Results – Souris River Summary

Table 2: Summary of 2022 LWCBMN results in Souris River Watershed District. Letters correspond to drainage areas in Figure 3. Data shown represents sites with sampling efforts adequate enough to calculate loads/exports.  
<sup>1</sup>See footnote for explanation of acronyms/abbreviations.

	Site Name	WSC Station	GDA (km <sup>2</sup> )	IDA (km <sup>2</sup> )	Gross/Incr.	TP load (tonnes/y)	TP export (kg/ha/y)
A	Antler River near Melita	05NF002	3218.64	NA	gross	9.11	0.028
B	Gainsborough Creek near Lyleton	05NF007	1347.81	NA	gross	11.59	0.086
C	Graham Creek near Melita	05NF008	606.1	NA	gross	2.89	0.048
D	Medora Creek near Napinka	05NG020	325.83	NA	gross	6.93	0.21
E	Pipestone Creek near Pipestone	05NG003	4283.77	NA	gross	49.76	0.12
F	Plum Creek near Souris	05NG007	5477.63	1211.45	Incr.	-41.96	-0.35
G	Souris River at Melita	05NF001	49511.1	44338.53	Incr.	91.25	0.021
H	Stony Creek near Broomhill	05NG019	461.12	NA	gross	5.73	0.12

To compare 2022 results to other years of data, please see the LWCBMN regional reports attached to the LWCBMN dataset (<https://datastream.org/en-ca/dataset/f10bb610-63cc-46c1-81b1-74a6b0310655>) which resides in Lake Winnipeg DataStream (<https://lakewinnipegdatastream.ca/explore/#/dataset/f10bb610-63cc-46c1-81b1-74a6b0310655/>).

<sup>1</sup> WSC = Water Survey of Canada.  
 GDA = gross drainage area (i.e., the total watershed area).  
 IDA = incremental drainage area (i.e., the total watershed area minus the total watershed area of any contained upstream sites with data adequate for load/export calculation).  
 Gross/Incr. = whether or not the adjacent TP load/export listed is from the gross or incremental (“Incr.”) drainage area of a site.

# 2022 Results – Hotspot Map

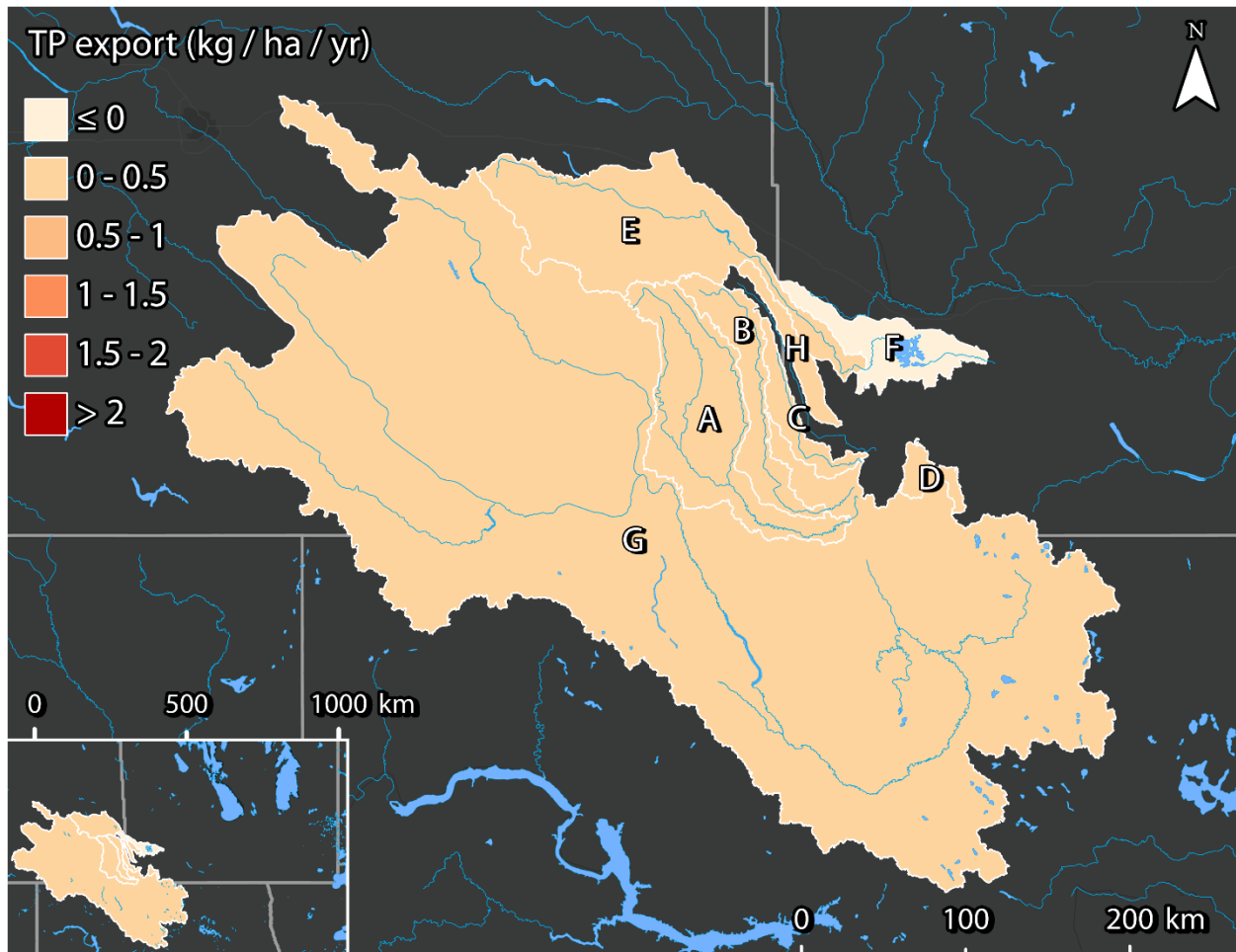


Figure 3: 2022 LWCBMN TP Export Hotspots in Souris River Watershed District. Letters correspond to sites listed in Table 2.

# 2022 Results – Individual Sites

## Antler River near Melita

Antler River is a river situated south of Melita that flows into the Souris River. This sampling site is located at Water Survey of Canada flow meter 05NF002. The sampling effort provided adequate coverage to calculate TP loads and exports.

Table 3: Indices of discharge and phosphorus from the gross drainage area of Antler River near Melita (05NF002) in 2022.

<b>Gross drainage area:</b>	3218.64 km <sup>2</sup>
<b>Peak discharge:</b>	14.35 m <sup>3</sup> s <sup>-1</sup> (2022-05-07)
<b>Peak TP concentration:</b>	0.64 mg/L (2022-03-30)
<b>% of water load in spring:</b>	59.09%
<b>% of TP load in spring:</b>	45.05%
<b>Water load:</b>	0.040 km <sup>3</sup> y <sup>-1</sup>
<b>TP load:</b>	9.11 tonnes P y <sup>-1</sup>
<b>Water export:</b>	12.57 mm y <sup>-1</sup>
<b>TP export:</b>	0.028 kg P ha <sup>-1</sup> y <sup>-1</sup>

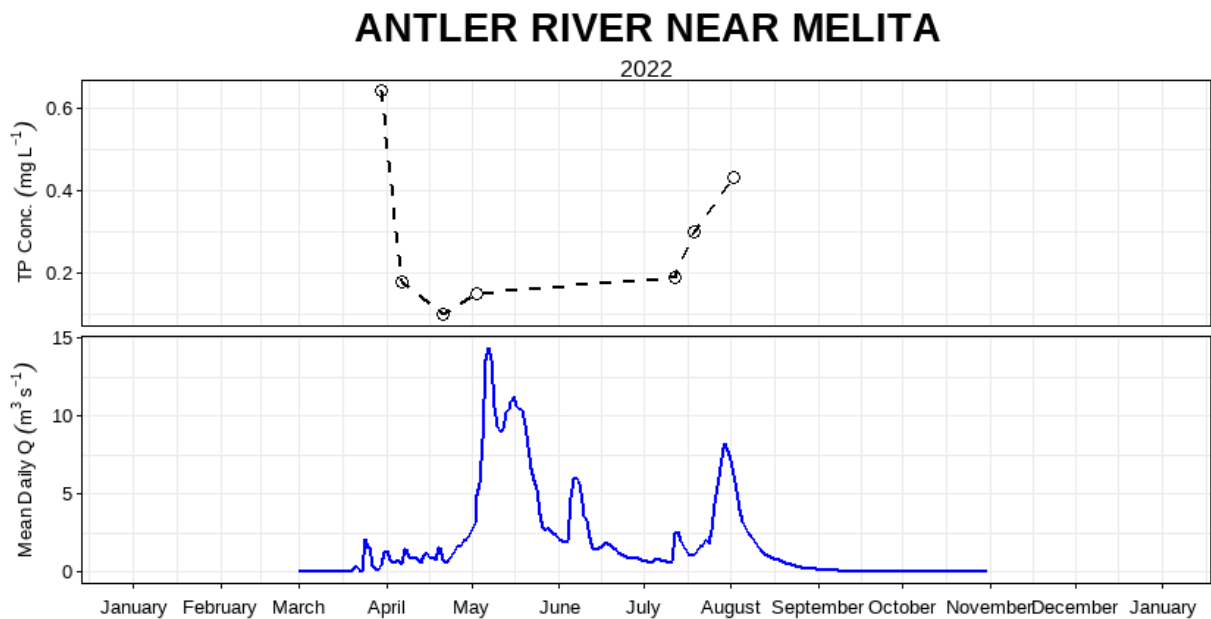


Figure 4: Mean daily discharge (m<sup>3</sup> s<sup>-1</sup>) and total phosphorus concentration (mg L<sup>-1</sup>) over the 2022 sampling season at Antler River near Melita (05NF002).

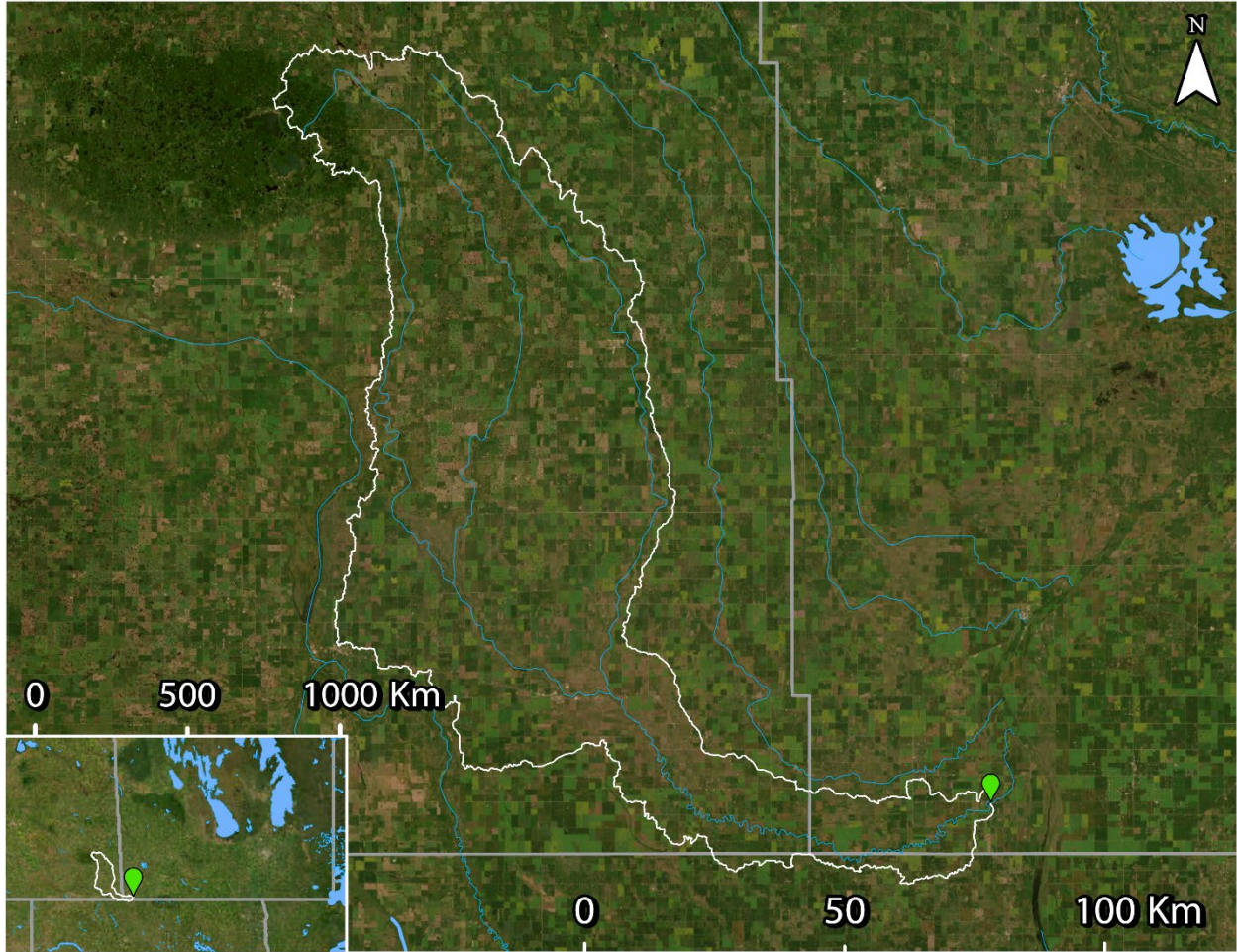


Figure 5: WSC station 05NF002 (green) and drainage area polygon (white - source: WSC). LWCBMN samples directly at the WSC station.

# Gainsborough Creek near Lyleton

Gainsborough Creek is a creek near Lyleton which flows east into the Souris River. This sampling site is located at Water Survey of Canada station 05NF007, north of Elm Creek, MB. The sampling effort provided excellent coverage to calculate TP loads and exports.

Table 4: Indices of discharge and phosphorus from the gross drainage area of Gainsborough Creek near Lyleton (05NF007) in 2022.

<b>Gross drainage area:</b>	1347.81 km <sup>2</sup>
<b>Peak discharge:</b>	16.20 m <sup>3</sup> s <sup>-1</sup> (2022-05-06)
<b>Peak TP concentration:</b>	0.74 mg/L (2022-08-02)
<b>% of water load in spring:</b>	58.38%
<b>% of TP load in spring:</b>	42.55%
<b>Water load:</b>	0.035 km <sup>3</sup> y <sup>-1</sup>
<b>TP load:</b>	11.59 tonnes P y <sup>-1</sup>
<b>Water export:</b>	26.05 mm y <sup>-1</sup>
<b>TP export:</b>	0.086 kg P ha <sup>-1</sup> y <sup>-1</sup>

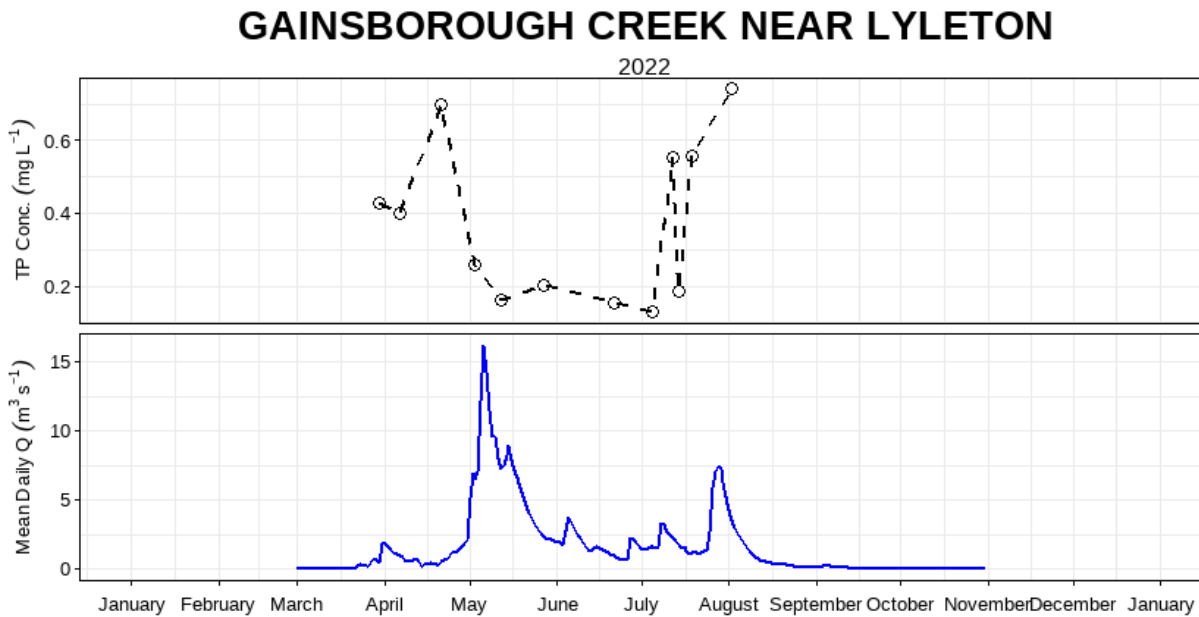


Figure 6: Mean daily discharge (m<sup>3</sup> s<sup>-1</sup>) and total phosphorus concentration (mg L<sup>-1</sup>) over the 2022 sampling season at Gainsborough Creek near Lyleton (05NF007).

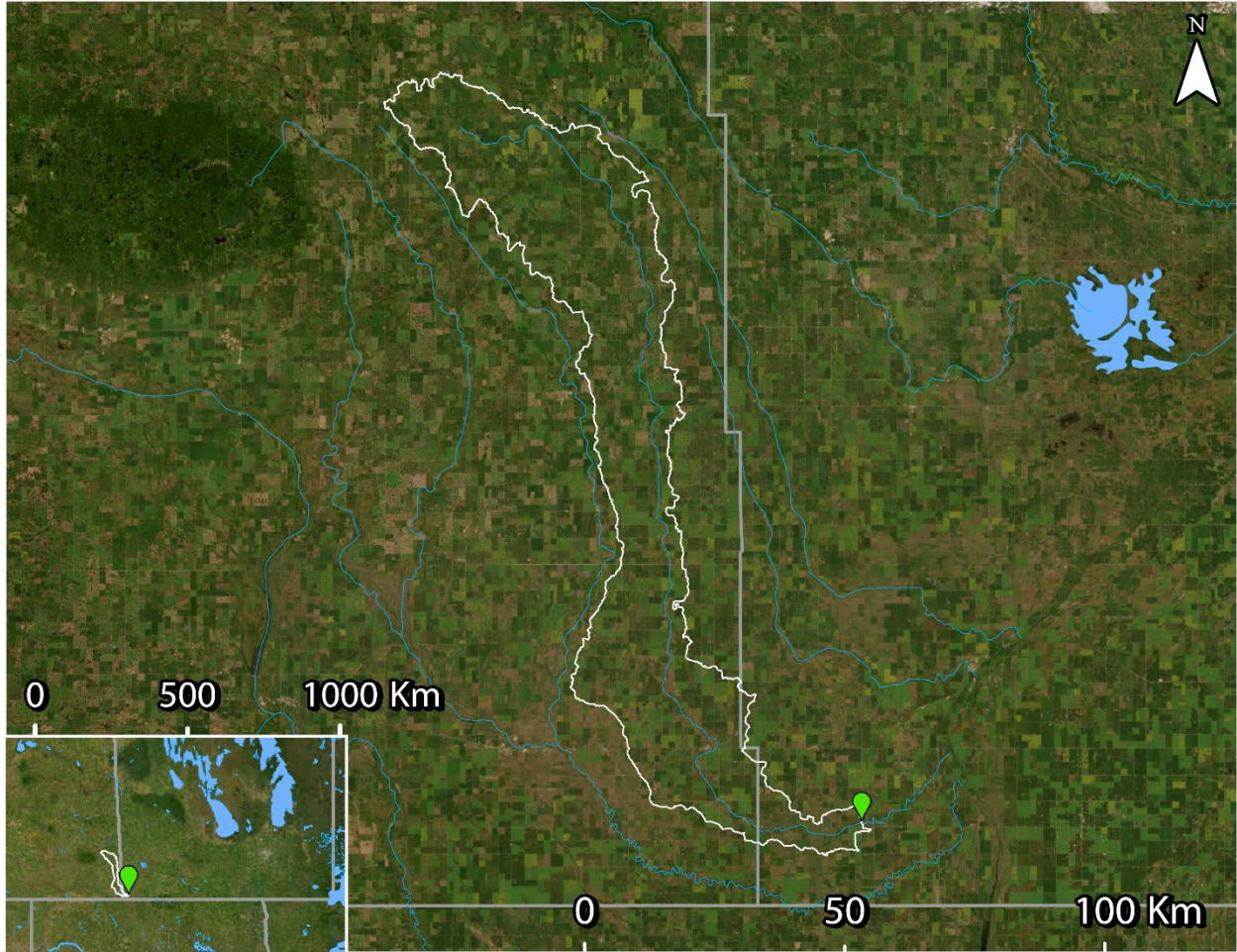


Figure 7: WSC station 05NF007 (green) and drainage area polygon (white - source: WSC). LWCBMN samples directly at the WSC station.

## Stony Creek near Broomhill

Stony Creek is a creek north of Broomhill which flows east into the Souris River. This sampling site is located at Water Survey of Canada flow meter 05NG019, near Lyleton. The sampling effort provided excellent coverage to calculate TP loads and exports.

Table 5: Indices of discharge and phosphorus from the gross drainage area of Stony Creek near Broomhill (05NG019) in 2022.

<b>Gross drainage area:</b>	461.12 km <sup>2</sup>
<b>Peak discharge:</b>	7.41 m <sup>3</sup> s <sup>-1</sup> (2022-05-05)
<b>Peak TP concentration:</b>	0.73 mg/L (2022-07-19)
<b>% of water load in spring:</b>	72.40%
<b>% of TP load in spring:</b>	58.95%
<b>Water load:</b>	0.016 km <sup>3</sup> y <sup>-1</sup>
<b>TP load:</b>	5.73 tonnes P y <sup>-1</sup>
<b>Water export:</b>	34.56 mm y <sup>-1</sup>
<b>TP export:</b>	0.12 kg P ha <sup>-1</sup> y <sup>-1</sup>

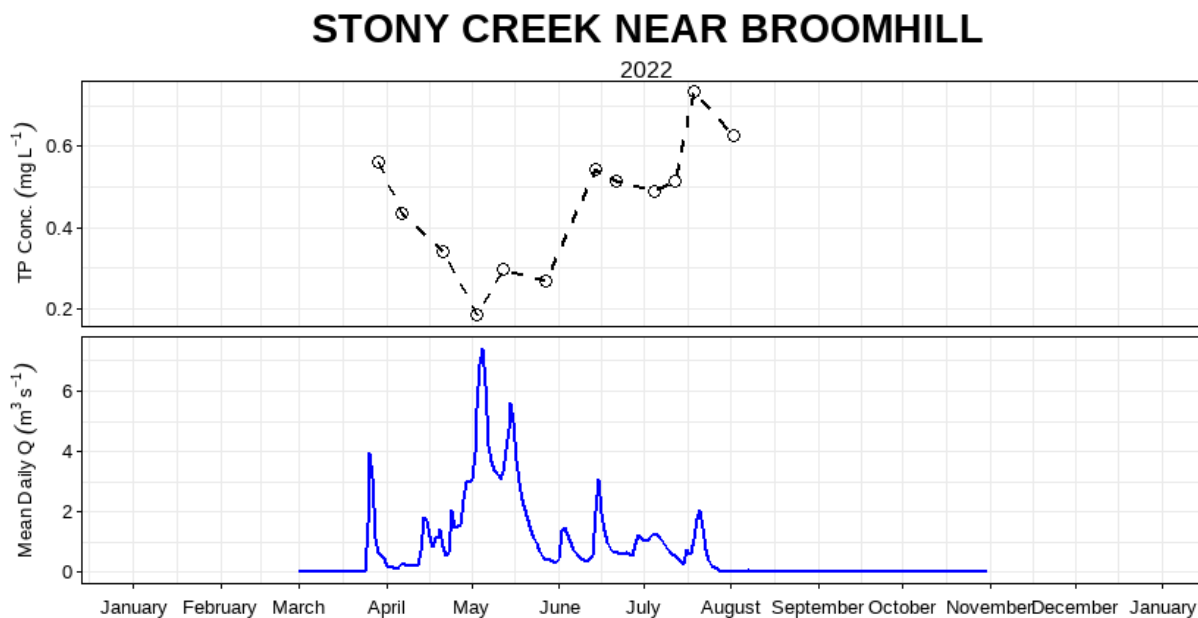


Figure 8: Mean daily discharge (m<sup>3</sup> s<sup>-1</sup>) and total phosphorus concentration (mg L<sup>-1</sup>) over the 2022 sampling season at Stony Creek near Broomhill (05NG019).

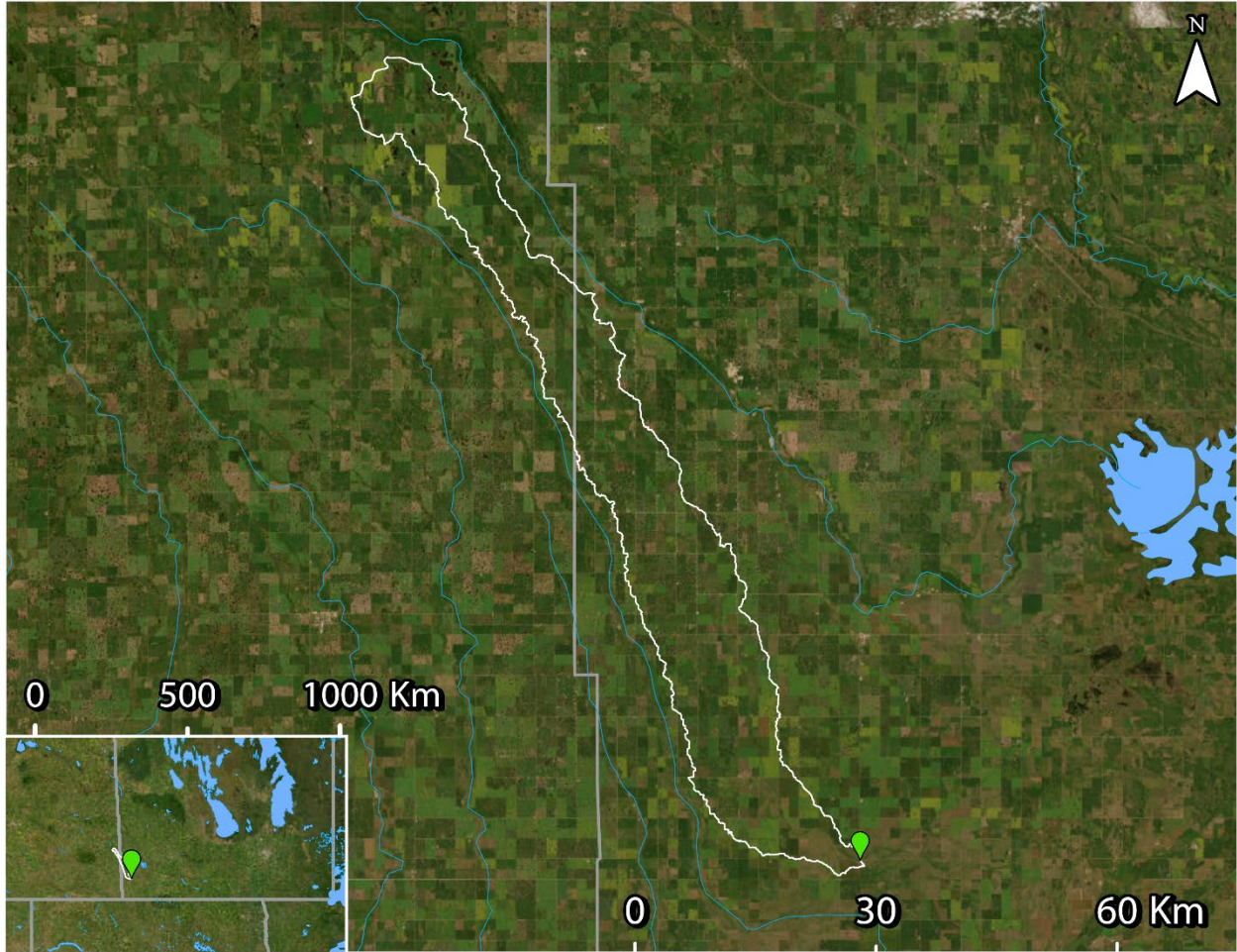


Figure 9: WSC station 05NG019 (green) and drainage area polygon (white – source: WSC). LWCBMN samples directly at the WSC station.

## Graham Creek near Melita

Graham Creek is a river situated southeast of Melita that flows into the Souris River. This sampling site is located at Water Survey of Canada station 05NF008, near Melita. The sampling effort provided excellent coverage to calculate TP loads and exports.

Table 6: Indices of discharge and phosphorus from the gross drainage area of Graham Creek near Melita (05NF008) in 2022.

<b>Gross drainage area:</b>	606.1 km <sup>2</sup>
<b>Peak discharge:</b>	4.43 m <sup>3</sup> s <sup>-1</sup> (2022-05-05)
<b>Peak TP concentration:</b>	0.72 mg/L (2022-03-30)
<b>% of water load in spring:</b>	75.21%
<b>% of TP load in spring:</b>	78.64%
<b>Water load:</b>	0.011 km <sup>3</sup> y <sup>-1</sup>
<b>TP load:</b>	2.89 tonnes P y <sup>-1</sup>
<b>Water export:</b>	17.50 mm y <sup>-1</sup>
<b>TP export:</b>	0.048 kg P ha <sup>-1</sup> y <sup>-1</sup>

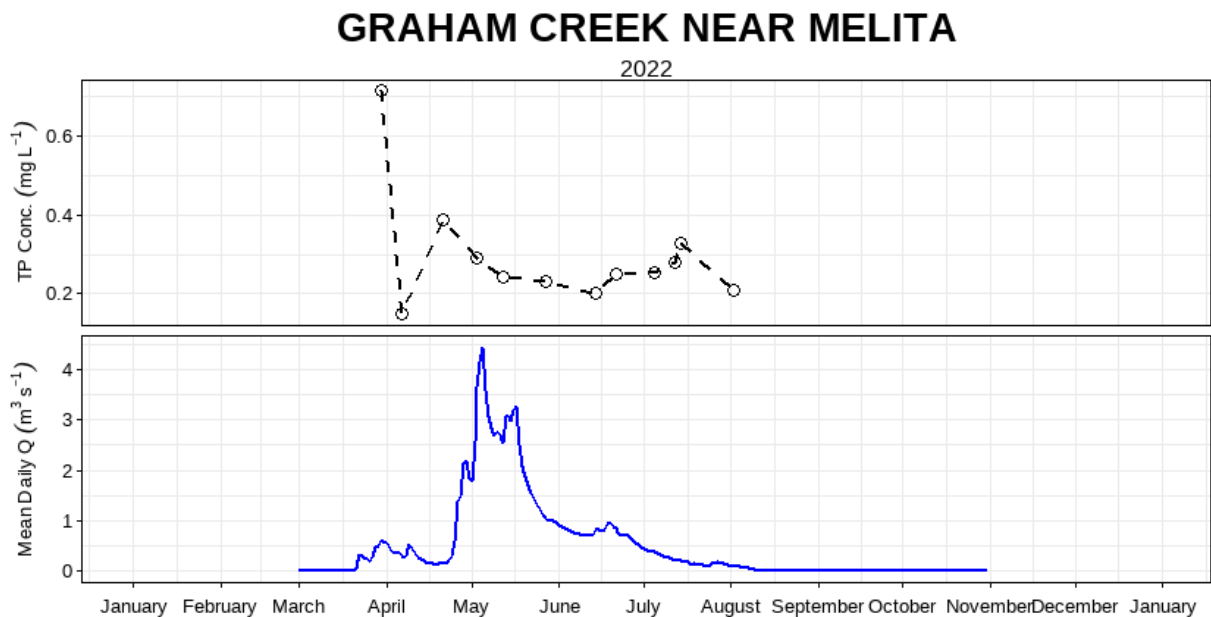


Figure 10: Mean daily discharge (m<sup>3</sup> s<sup>-1</sup>) and total phosphorus concentration (mg L<sup>-1</sup>) over the 2022 sampling season at Graham Creek near Melita (05NF008).

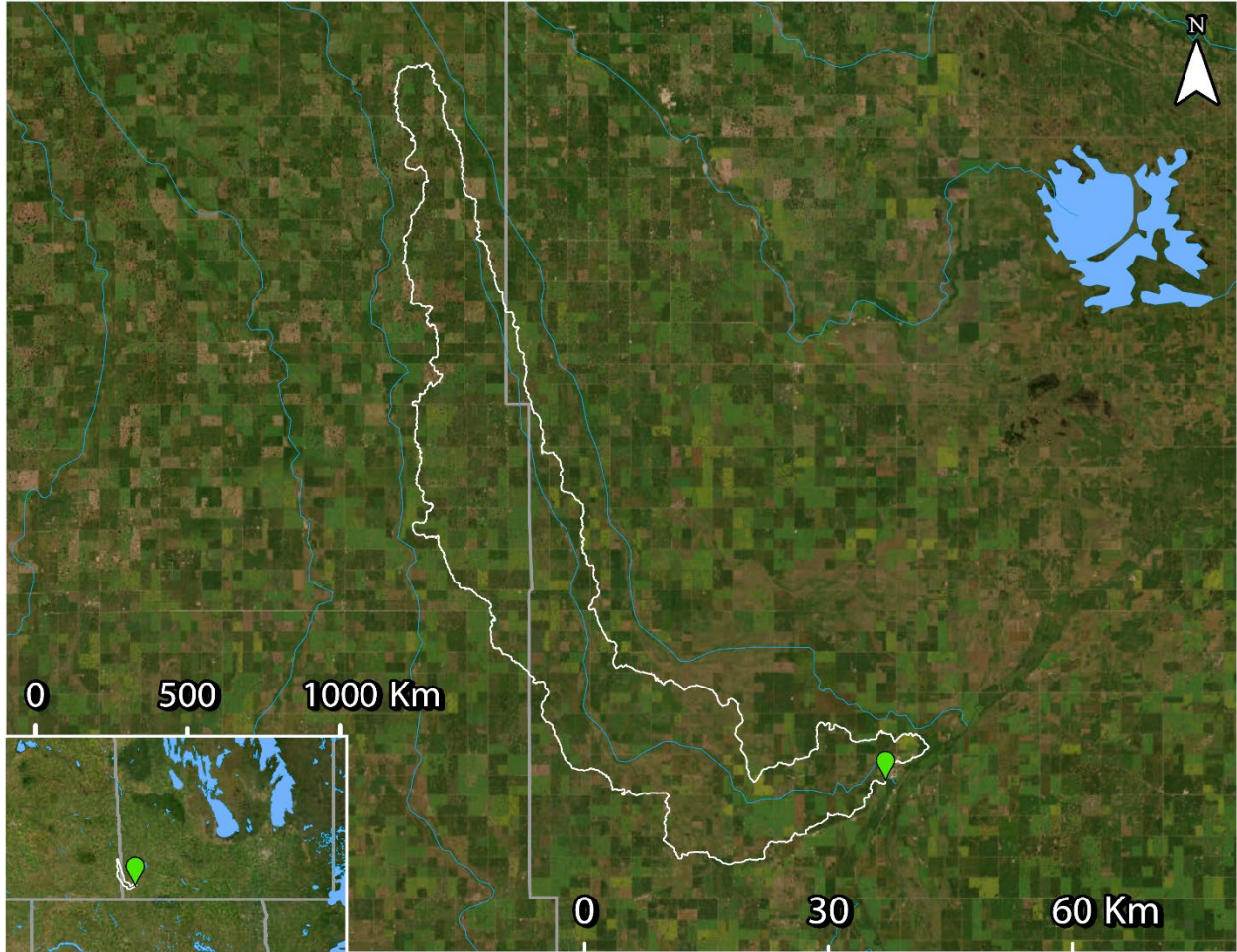


Figure 11: WSC station 05NF008 (green) and drainage area polygon (white – source: WSC). LWCBMN samples directly at the WSC station.

## Souris River at Melita

The Souris River originating in Saskatchewan, flows south into North Dakota and back north into Manitoba. It is approximately 700 km in length, and merges with the Assiniboine River at Treesbank. This sampling site is located at Water Survey of Canada station 05NF001, near Melita. The sampling effort provided adequate coverage to calculate TP loads and exports.

Table 7: Indices of discharge and phosphorus from the incremental drainage area of Souris River at Melita (05NF001). See Supplemental Table 1 for gross calculations.

<b>Incremental drainage area:</b>	44338.53 km <sup>2</sup>
<b>Peak discharge:</b>	84.03 m <sup>3</sup> s <sup>-1</sup> (2022-05-19)
<b>Peak TP concentration:</b>	0.51 mg/L (2022-07-12)
<b>% of water load in spring:</b>	60.77%
<b>% of TP load in spring:</b>	51.12%
<b><sup>1</sup>Incremental water load:</b>	0.28 km <sup>3</sup> y <sup>-1</sup>
<b><sup>1</sup>Incremental TP load:</b>	91.25 tonnes P y <sup>-1</sup>
<b><sup>2</sup>Incremental water export:</b>	6.25 mm y <sup>-1</sup>
<b><sup>2</sup>Incremental TP export:</b>	0.021 kg P ha <sup>-1</sup> y <sup>-1</sup>

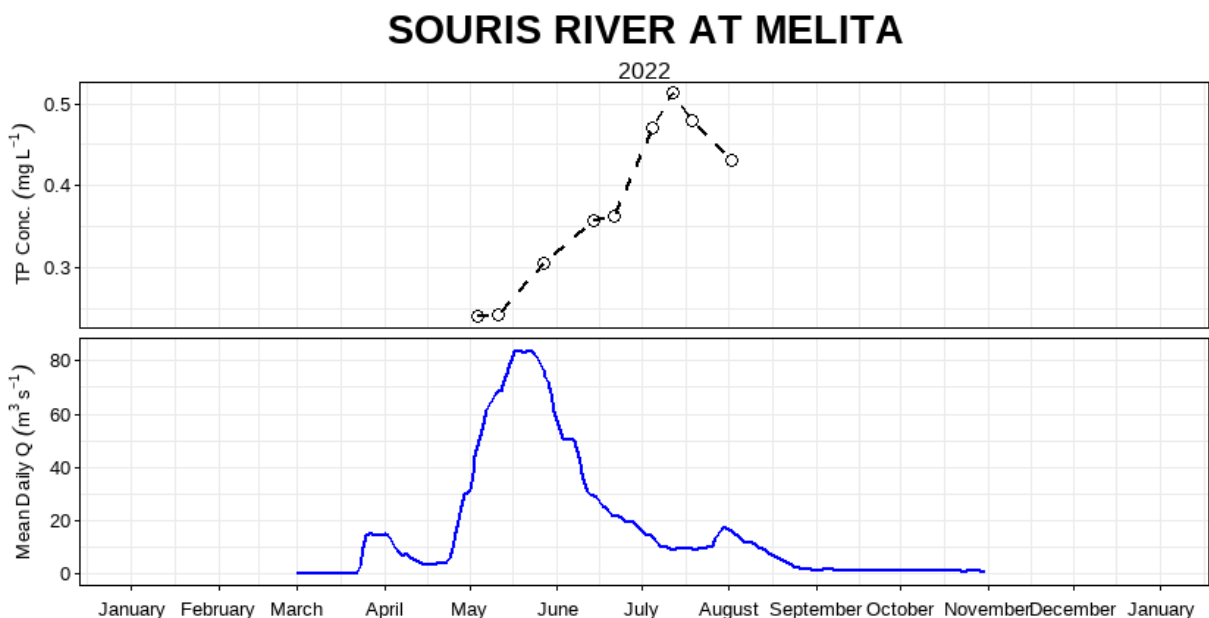


Figure 12: Mean daily discharge (m<sup>3</sup> s<sup>-1</sup>) and total phosphorus concentration (mg L<sup>-1</sup>) over the 2022 sampling season at Souris River at Melita (05NF001).

<sup>1</sup> Incremental values are calculated by subtracting gross “Antler River near Melita”, “Gainsborough Creek near Lyleton”, and Graham Creek near Melita” from “Souris River at Melita” values.

<sup>2</sup> Incremental exports are calculated by dividing incremental loads by incremental drainage areas.

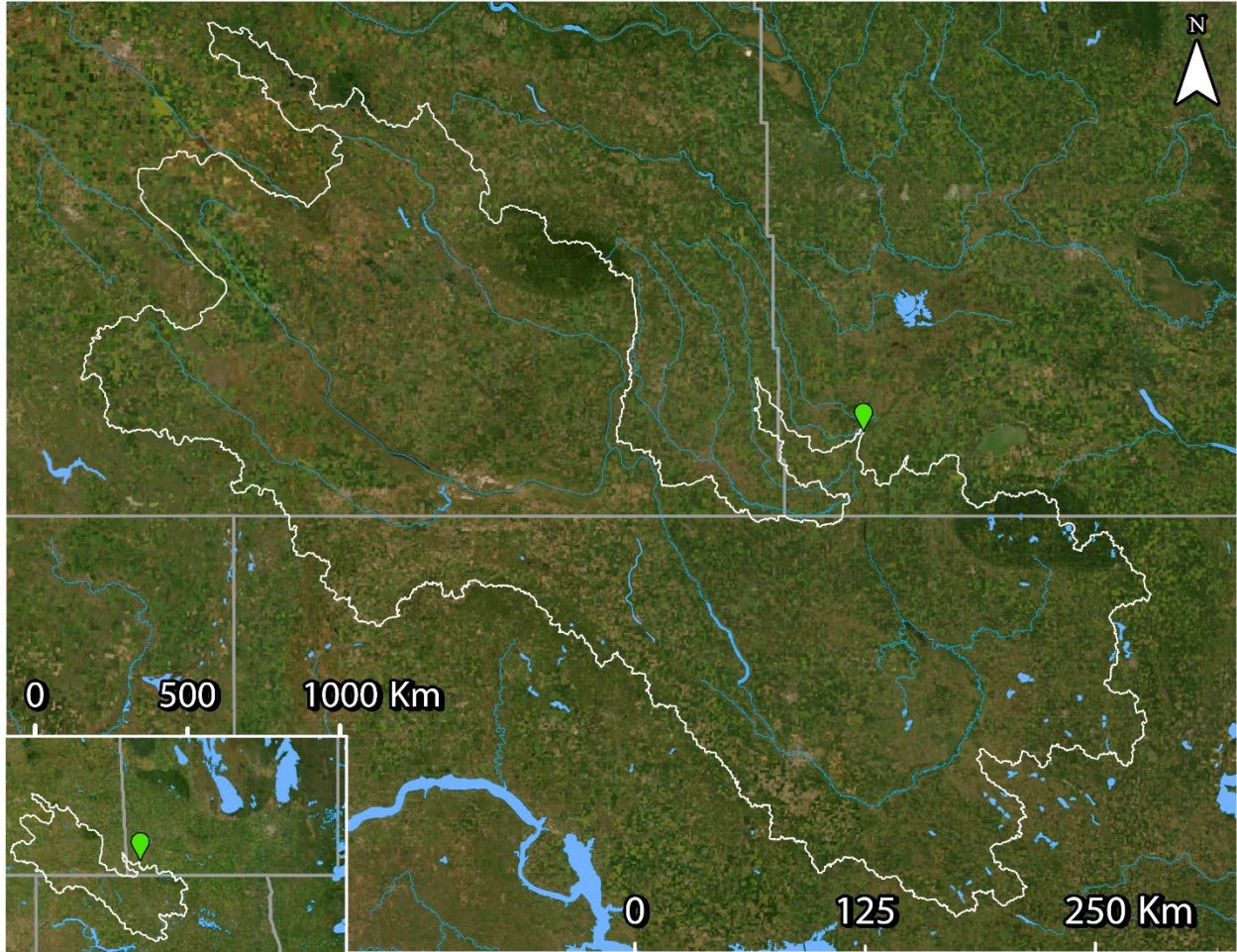


Figure 13: WSC station 05NF001 (green), and incremental drainage area polygon (white - source: WSC). See Supplemental Figure 1 for upstream drainage areas used to calculate incremental area. LWCBMN samples directly at the WSC station.

## Medora Creek near Napinka

Medora Creek is located north of Napinka and south of Napinka Lagoon (lake). It flows northwesterly into the Souris River from Turtle Mountain. This sampling site is located at Water Survey of Canada station 05NG020, near Napinka. The sampling effort provided adequate coverage to calculate TP loads and exports.

Table 8: Indices of discharge and phosphorus from the gross drainage area of Medora Creek near Napinka (05NG020) in 2022.

<b>Gross drainage area:</b>	325.83 km <sup>2</sup>
<b>Peak discharge:</b>	15.04 m <sup>3</sup> s <sup>-1</sup> (2022-04-28)
<b>Peak TP concentration:</b>	10.06 mg/L (2022-07-12)
<b>% of water load in spring:</b>	90.69%
<b>% of TP load in spring:</b>	73.60%
<b>Water load:</b>	0.014 km <sup>3</sup> y <sup>-1</sup>
<b>TP load:</b>	6.93 tonnes P y <sup>-1</sup>
<b>Water export:</b>	42.53 mm y <sup>-1</sup>
<b>TP export:</b>	0.21 kg P ha <sup>-1</sup> y <sup>-1</sup>

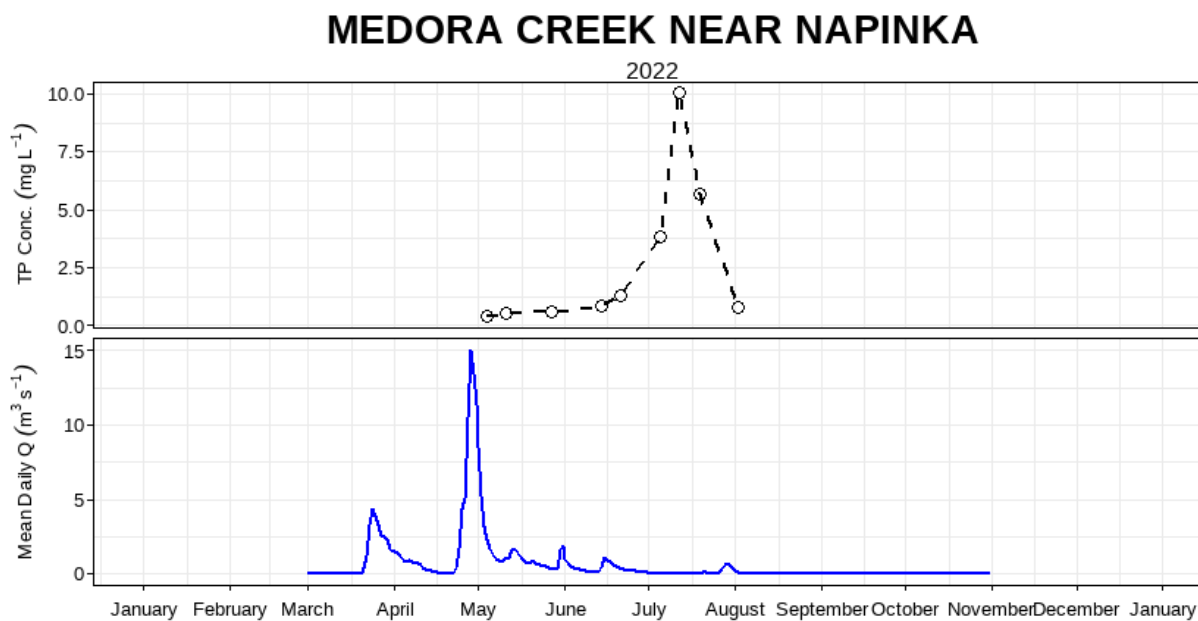


Figure 14: Mean daily discharge (m<sup>3</sup> s<sup>-1</sup>) and total phosphorus concentration (mg L<sup>-1</sup>) over the 2022 sampling season at Medora Creek near Napinka (05NG020).

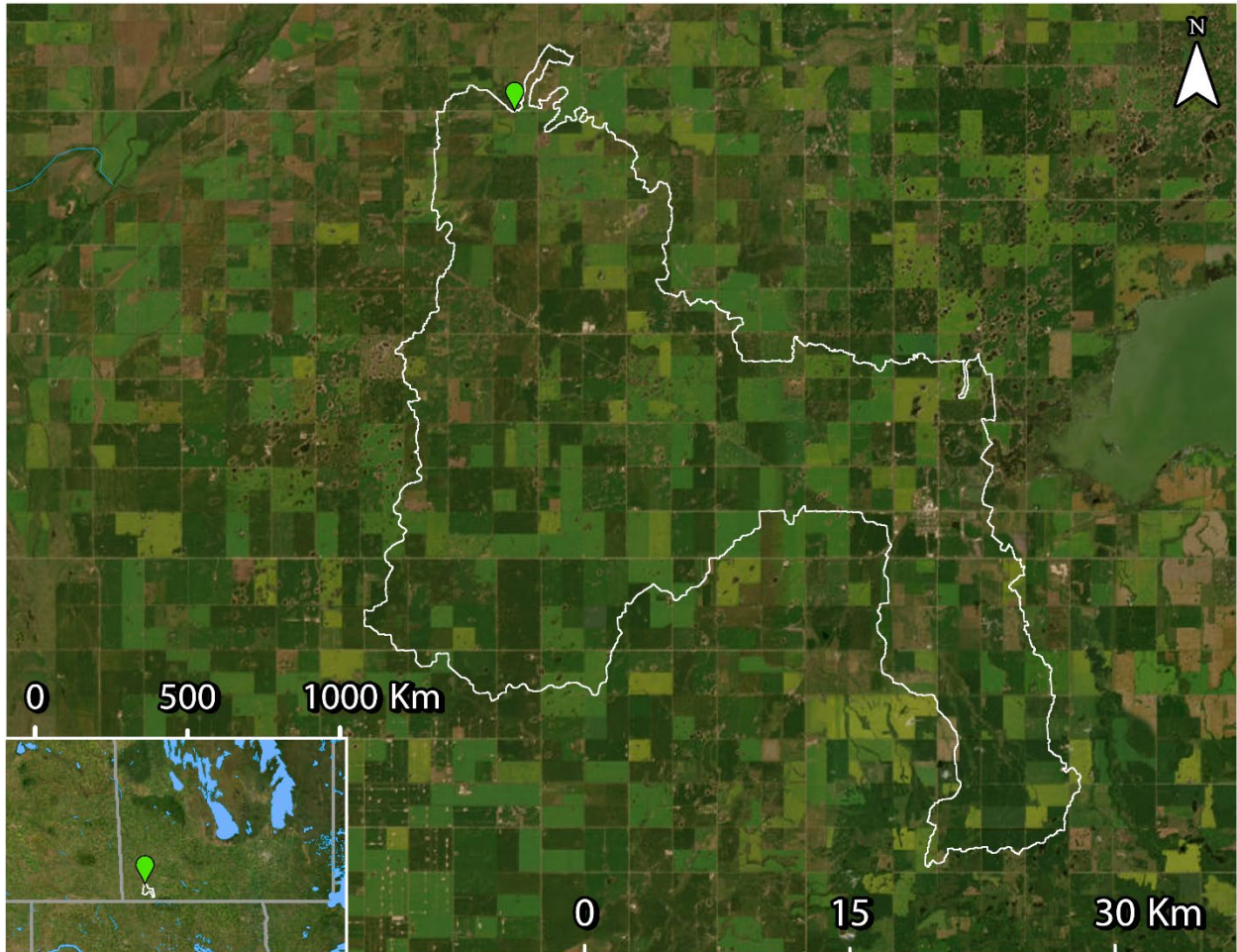


Figure 15: WSC station 05NG020 (green) and drainage area polygon (white – source: WSC). LWCBMN samples directly at the WSC station.

## Pipestone Creek near Pipestone

This sample site is located on Pipestone Creek, which flows into Oak Lake. This sampling site is located at Water Survey of Canada flow meter 05NG003, near Pipestone. The sampling effort provided excellent coverage to calculate TP loads and exports.

Table 9: Indices of discharge and phosphorus from the gross drainage area of Pipestone Creek near Pipestone (05NG003) in 2022.

<b>Gross drainage area:</b>	4283.77 km <sup>2</sup>
<b>Peak discharge:</b>	41.41 m <sup>3</sup> s <sup>-1</sup> (2022-05-08)
<b>Peak TP concentration:</b>	0.69 mg/L (2022-03-29)
<b>% of water load in spring:</b>	53.85%
<b>% of TP load in spring:</b>	57.77%
<b>Water load:</b>	0.15 km <sup>3</sup> y <sup>-1</sup>
<b>TP load:</b>	49.76 tonnes P y <sup>-1</sup>
<b>Water export:</b>	34.80 mm y <sup>-1</sup>
<b>TP export:</b>	0.12 kg P ha <sup>-1</sup> y <sup>-1</sup>

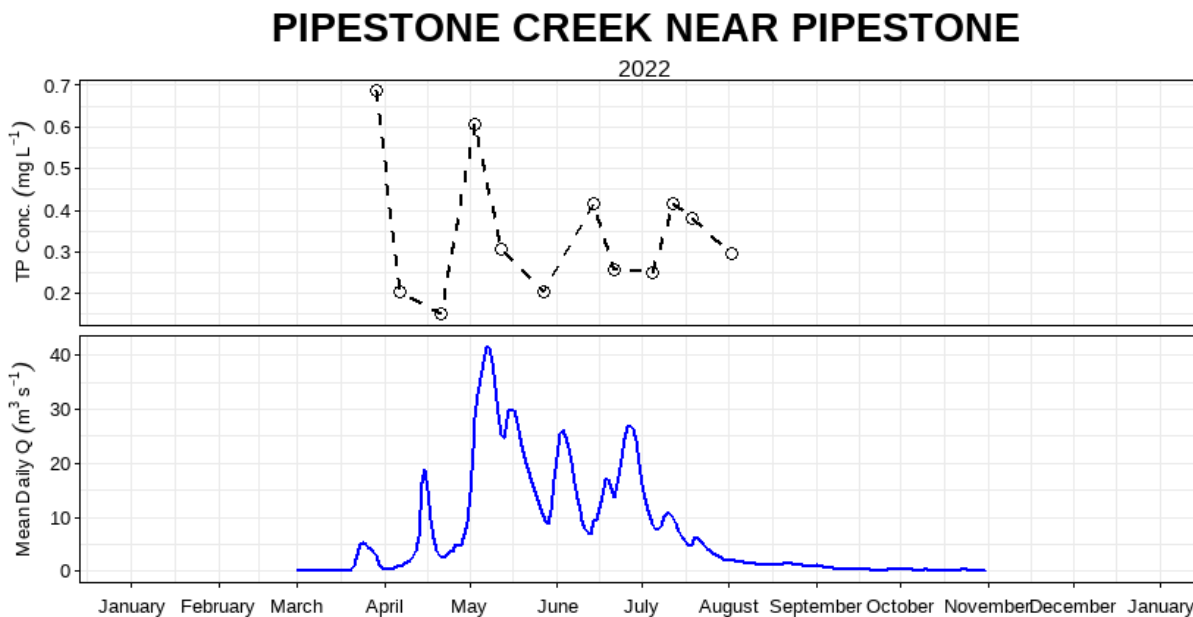


Figure 16: Mean daily discharge (m<sup>3</sup> s<sup>-1</sup>) and total phosphorus concentration (mg L<sup>-1</sup>) over the 2022 sampling season at Pipestone Creek near Pipestone (05NG003).

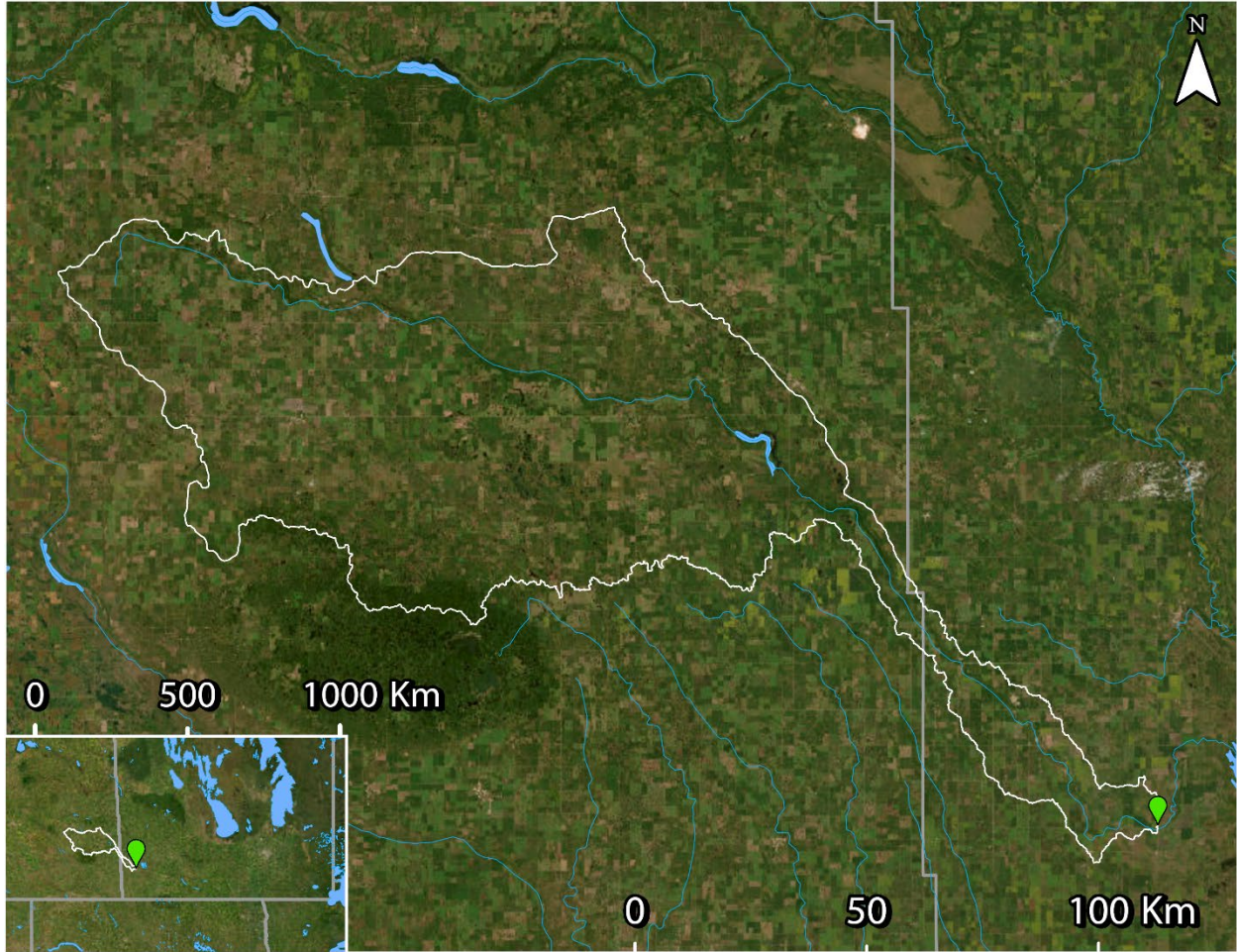


Figure 17: WSC station 05NG003 (green) and drainage area polygon (white - source: AAFC). LWCBMN samples directly at the WSC station.

## Plum Creek near Souris

This sample site is located upstream of the City of Souris along Plum Creek, which flows into the Souris River. The drainage area of this site includes Oak Lake. This stretch of Plum Creek drains an area comprising mainly of agricultural and forested areas. This sampling site is located at Water Survey of Canada station 05NG007, near Souris. The sampling effort provided excellent coverage to calculate TP loads and exports.

Table 10: Indices of discharge and phosphorus from the incremental drainage area of Plum Creek near Souris (05NG007). See Supplemental Table 2 for gross calculations.

<b>Incremental drainage area:</b>	1211.45 km <sup>2</sup>
<b>Peak discharge:</b>	10.68 m <sup>3</sup> s <sup>-1</sup> (2022-07-19)
<b>Peak TP concentration:</b>	0.82 mg/L (2022-04-21)
<b>% of water load in spring:</b>	14.06%
<b>% of TP load in spring:</b>	12.06%
<b><sup>1</sup>Incremental water load:</b>	-0.071 km <sup>3</sup> y <sup>-1</sup>
<b><sup>1</sup>Incremental TP load:</b>	-41.96 tonnes P y <sup>-1</sup>
<b><sup>2</sup>Incremental water export:</b>	-58.23 mm y <sup>-1</sup>
<b><sup>2</sup>Incremental TP export:</b>	-0.35 kg P ha <sup>-1</sup> y <sup>-1</sup>

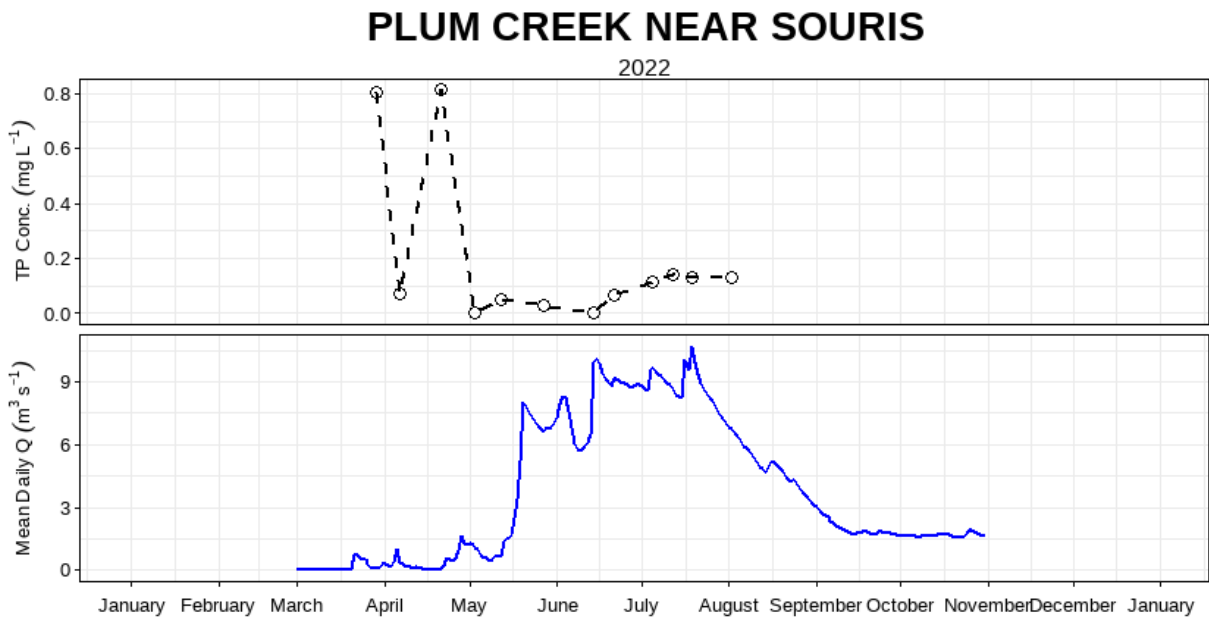


Figure 18: Mean daily discharge (m<sup>3</sup> s<sup>-1</sup>) and total phosphorus concentration (mg L<sup>-1</sup>) over the 2022 sampling season at Plum Creek near Souris (05NG007).

<sup>1</sup> Incremental values are calculated by subtracting gross "Pipestone Creek near Pipestone" values from gross "Plum Creek near Souris" values.

<sup>2</sup> Incremental exports are calculated by dividing incremental loads by incremental drainage areas.

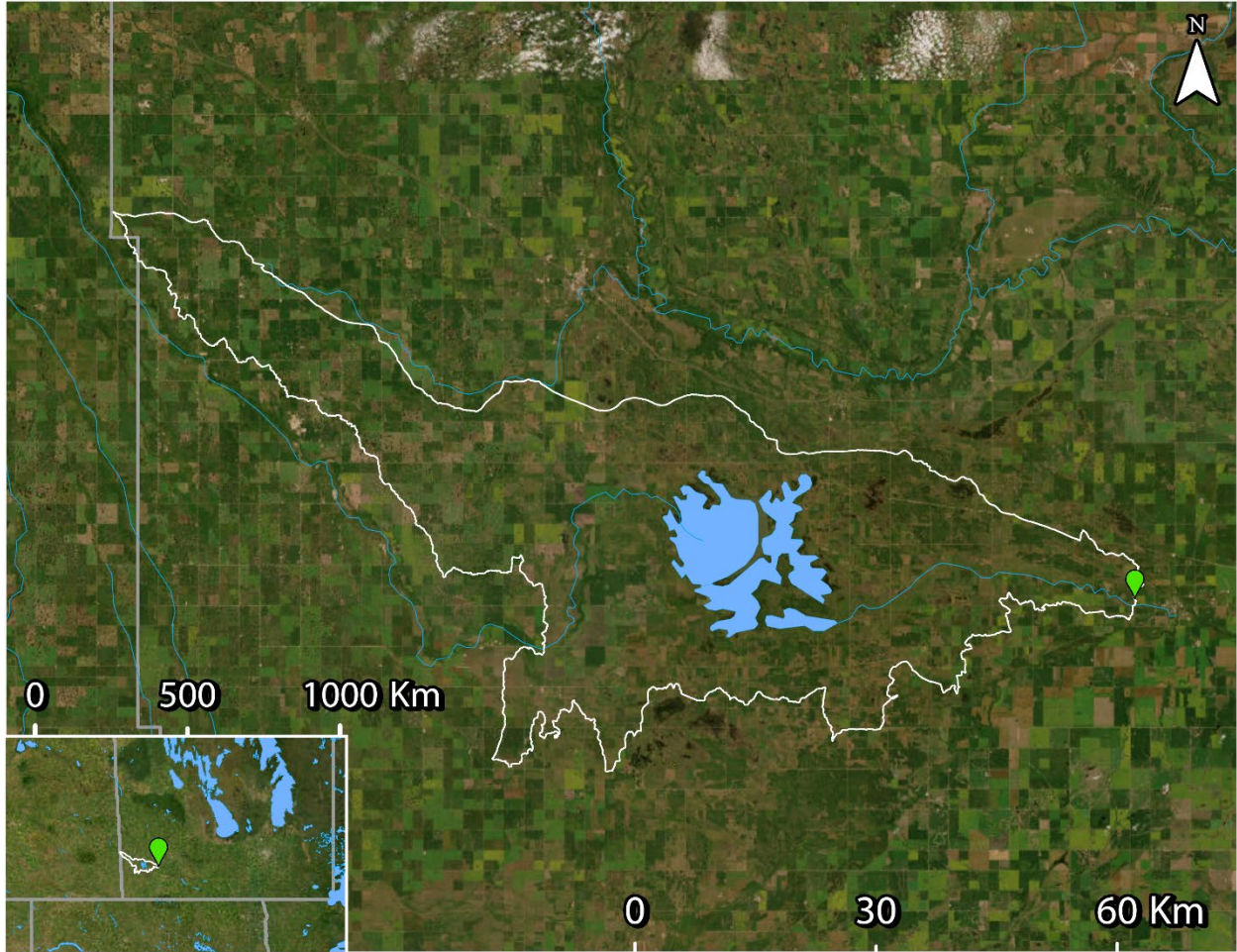


Figure 19: WSC station 05NG007 (green), and incremental drainage area polygon (white - source: WSC). See Supplemental Figure 2 for upstream drainage areas used to calculate incremental area. LWCBMN samples directly at the WSC station.

## Sites without capacity for load/export calculation

### Souris River at Souris

The Souris River originating in Saskatchewan, flows south into North Dakota and back north into Manitoba. It is approximately 700 km in length, and merges with the Assiniboine River at Treesbank. This sample site is located at the Water Survey of Canada flow meter 05NG021, near Souris. Because Plum Creek joins Souris River between the WSC station and the sampling location, this prevents accurate calculation of load/export.

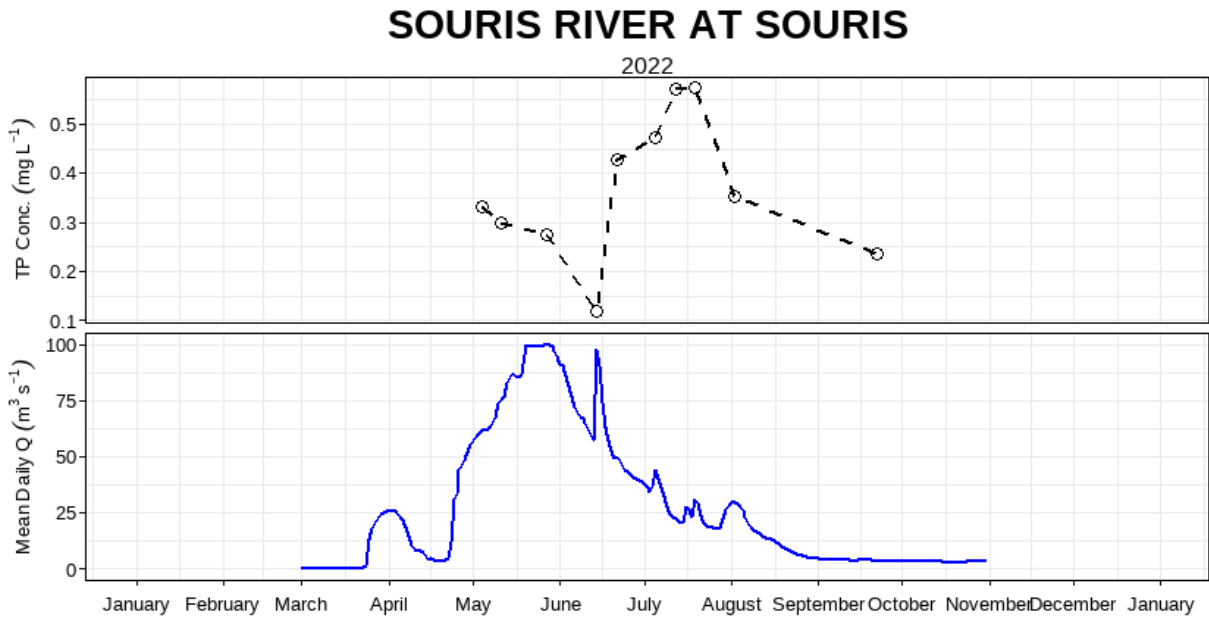


Figure 20: Mean daily discharge (m<sup>3</sup> s<sup>-1</sup>) and total phosphorus concentration (mg L<sup>-1</sup>) over the 2022 sampling season at Souris River at Souris (05NG021).

### Elgin Creek near Souris

Elgin Creek is a river located upstream of the City of Souris that flows into the Souris River. This sampling site is located at Water Survey of Canada flow meter 05NG012, southeast of the City of Souris. Calculating phosphorus loads/exports would be inaccurate due to the lack of samples taken after prior to late May.

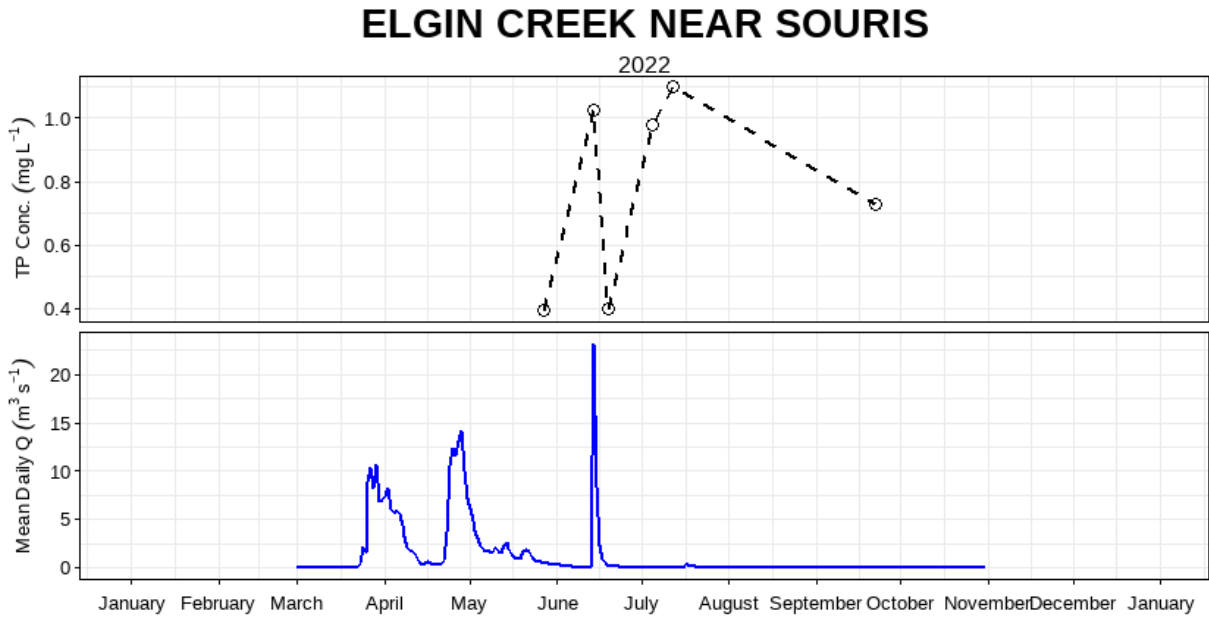


Figure 21: Mean daily discharge (m³ s⁻¹) and total phosphorus concentration (mg L⁻¹) at Elgin Creek near Souris (05NG012).

### Souris River near Minot

The Souris River originating in Saskatchewan, flows south into North Dakota and back north into Manitoba. It is approximately 700 km in length, and merges with the Assiniboine River at Treesbank. This sampling site is located at USGS site 05117600, in the centre of Minot, ND. We cannot calculate phosphorus loads and exports because flow is not measured.

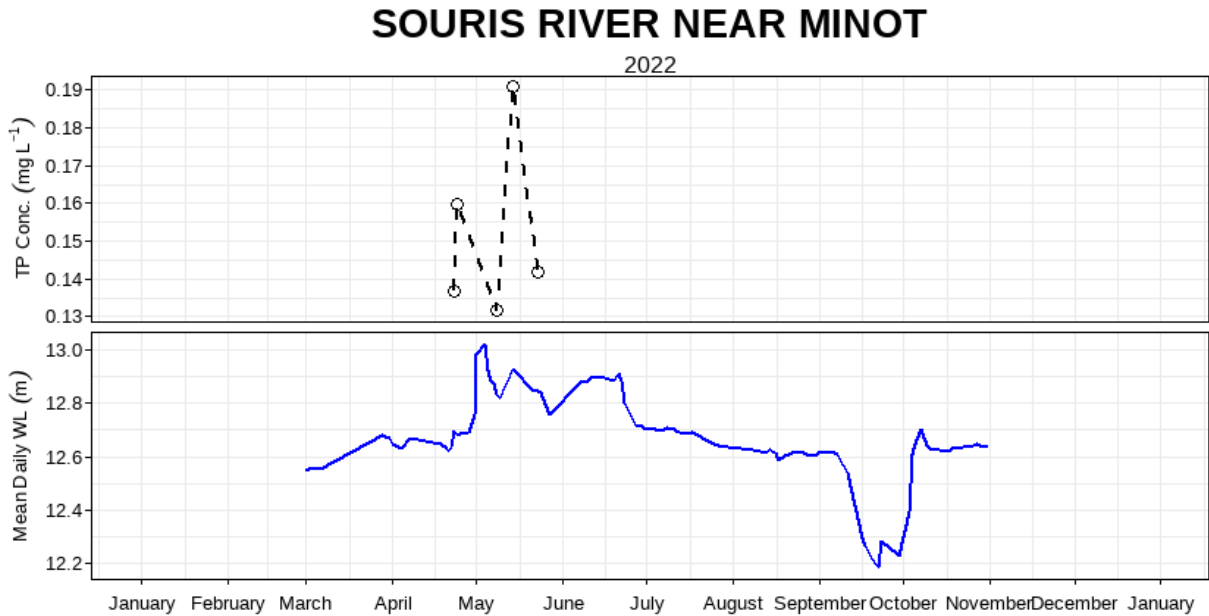


Figure 22: Mean daily water level (m) and total phosphorus concentration (mg L<sup>-1</sup>) over the 2022 sampling season at Souris River near Minot (USGS station 05117600).

### Whitewater Lake near Boissevain

Whitewater Lake is situated north of Turtle Mountain Provincial Park. The gross drainage area is 684 km<sup>2</sup> and consists mainly of agricultural land. This sample site is located at the Water Survey of Canada flow meter 05NG021, near Boissevain. This site has become a terminal basin (does not contribute water or phosphorus downstream) because of evaporation.

### WHITEWATER LAKE NEAR BOISSEVAIN

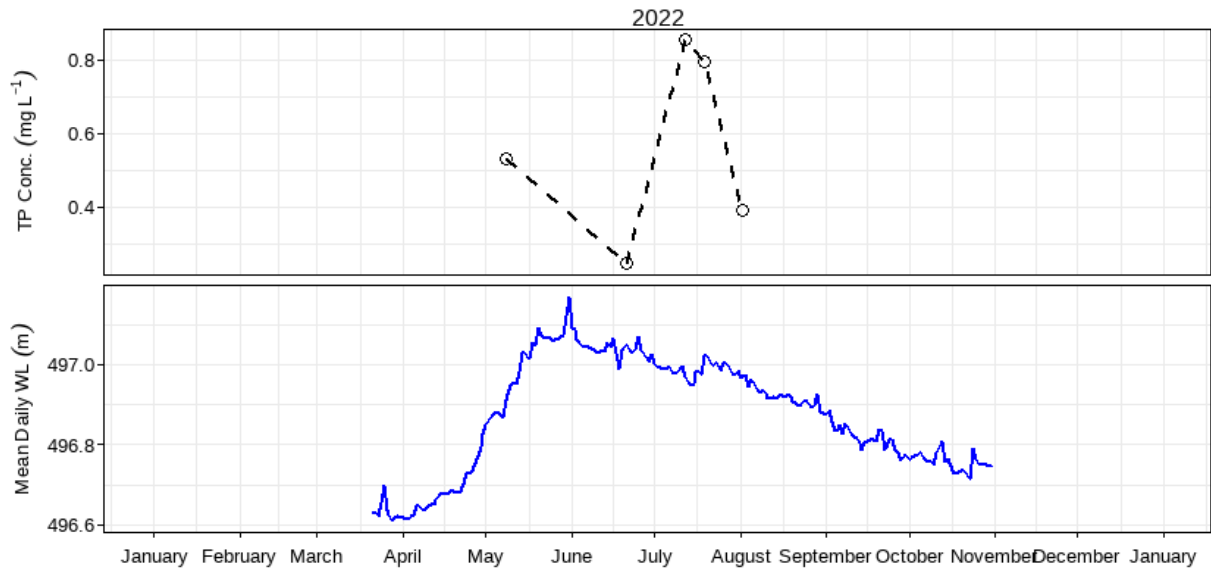


Figure 23: Mean daily water level (m) and total phosphorus concentration (mg L<sup>-1</sup>) over the 2022 sampling season at Whitewater Lake near Boissevain (05NG023).

### Turtlehead Creek at Deloraine Reservoir

Turtlehead Creek is located upstream of Deloraine Reservoir. It has a drainage area of 74.9 km<sup>2</sup> (East Souris River Watershed Hydrology, 2005). We cannot calculate phosphorus loads and exports because flow is not measured at this site.

### TURTLEHEAD CREEK AT DELORAINE RESERVOIR

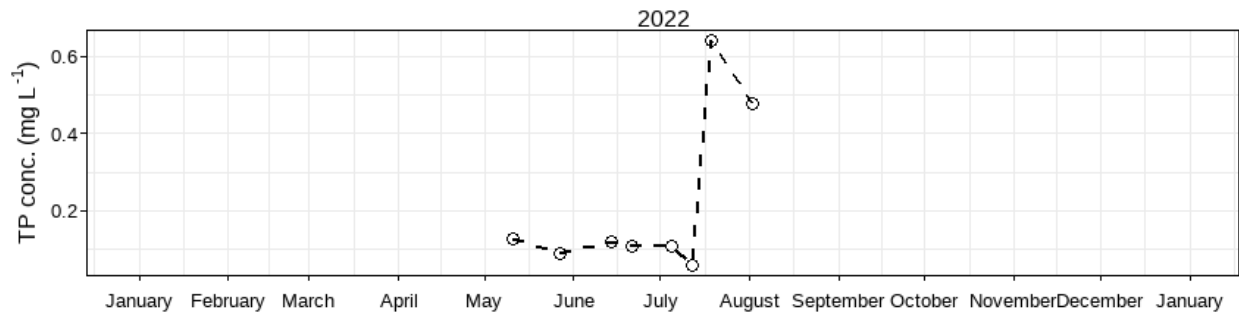


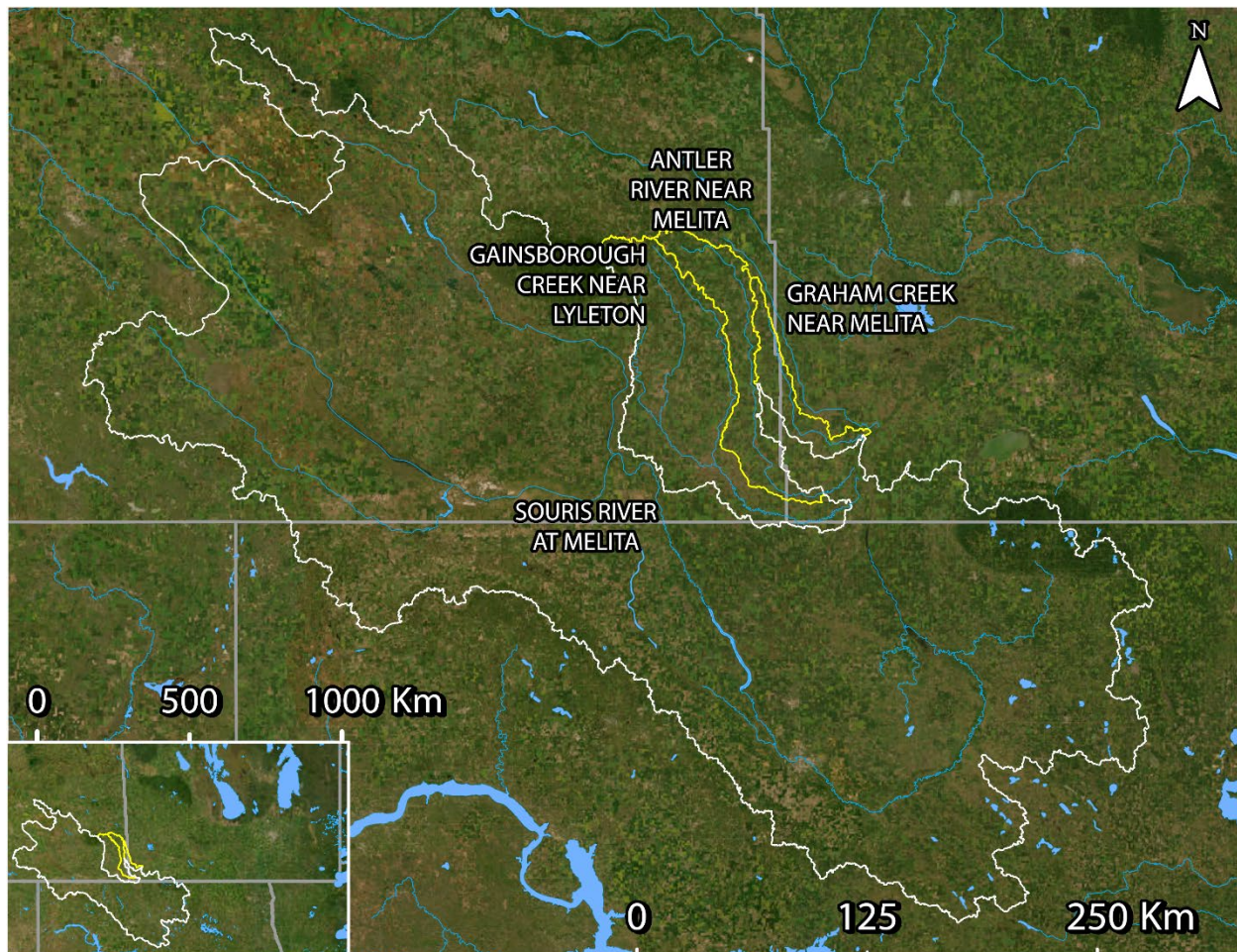
Figure 24: Total phosphorus concentration (mg L<sup>-1</sup>) over the 2022 sampling season at Turtlehead Creek at Deloraine Reservoir.

# Incremental Calculations

## Souris River at Melita

Supplemental Table 1: Indices of discharge and phosphorus from the combined gross drainage area and stream discharge of Souris River at Melita (05NF001).

<b>Gross drainage area:</b>	49511.1 km <sup>2</sup>
<b>Water load:</b>	0.36 km <sup>3</sup> y <sup>-1</sup>
<b>TP load:</b>	114.85 tonnes P y <sup>-1</sup>
<b>Water export:</b>	7.33 mm y <sup>-1</sup>
<b>TP export:</b>	0.023 kg P ha <sup>-1</sup> y <sup>-1</sup>

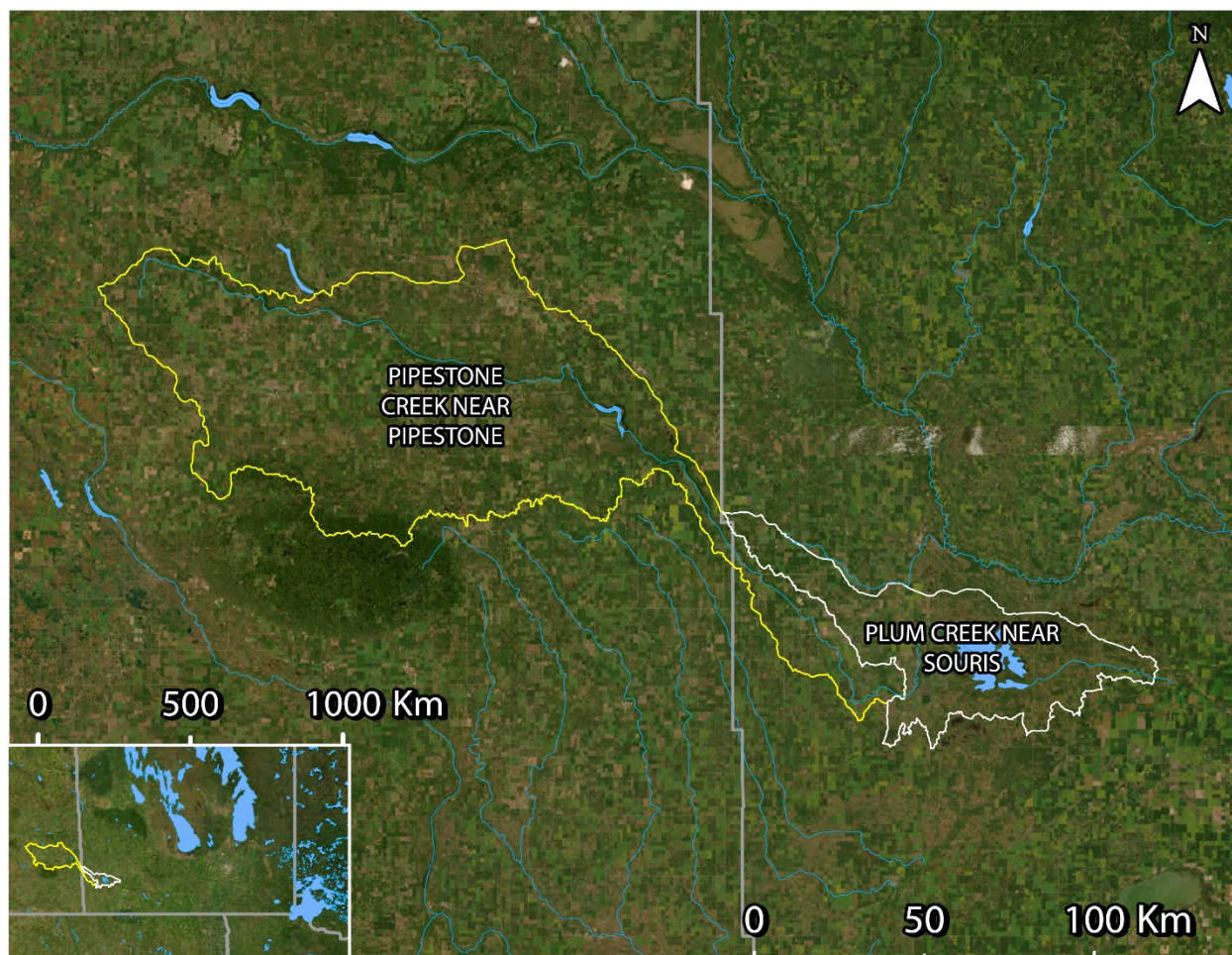


Supplemental Figure 1: Incremental drainage area in white and upstream drainage areas in yellow. Incremental values are calculated by subtracting gross “Antler River near Melita”, “Gainsborough Creek near Lyleton”, and Graham Creek near Melita” from “Souris River at Melita” values.

# Plum Creek near Souris

Supplemental Table 2: Indices of discharge and phosphorus from the gross drainage area of Pembina River downstream of Plum Creek near Souris (05NG007) in 2022.

<b>Gross drainage area:</b>	5477.63 km <sup>2</sup>
<b>Water load:</b>	0.079 km <sup>3</sup> y <sup>-1</sup>
<b>TP load:</b>	7.80 tonnes P y <sup>-1</sup>
<b>Water export:</b>	14.34 mm y <sup>-1</sup>
<b>TP export:</b>	0.014 kg P ha <sup>-1</sup> y <sup>-1</sup>



Supplemental Figure 2: Incremental drainage area in white and upstream drainage area in yellow. Incremental values are calculated by subtracting gross “Pipestone Creek near Pipestone” values from gross “Plum Creek near Souris” values.

# Map Sources

---

## Drainage area polygons

Primarily, and whenever possible, drainage area polygons were taken from the Water Survey of Canada's (WSC) National Hydrometric Network Basin Polygons. Released on July 15, 2022, this prerelease version of the dataset contains drainage area polygons for over 7300 of the 7896 active and discontinued WSC stations. According to WSC, this dataset will continue to be updated as new polygons are added. For our analysis, we used drainage areas from this dataset.

Link: <https://catalogue.ec.gc.ca/geonetwork/srv/eng/catalog.search#/metadata/0c121878-ac23-46f5-95df-eb9960753375>

Secondarily, when no WSC drainage area polygons were available, or when it was necessary to enable accurate incremental calculations, we used drainage area polygons from the Total Gross Drainage Areas of the Agriculture and Agri-Food Canada (AAFC)'s Watersheds Project – 2013

Link: <https://open.canada.ca/data/en/dataset/67c8352d-d362-43dc-9255-21e2b0cf466c>

Due to the required use of drainage area polygons from two different datasets, some polygons may slightly overlap. Hotspot maps, as a result, have a few instances where a drainage area is visually cut off. However, most of these instances are very minor, and we display all watersheds in their full extent on each sampling site's individual section.

## Map layers

Satellite imagery used in all maps is from the World Imagery map layer (Source: Esri, Maxar, Earthstar Geographics, and the GIS User Community). World Imagery provides one meter or better satellite and aerial imagery in many parts of the world and lower resolution satellite imagery worldwide.

Lake and river map data used in all maps is from North America Environmental Atlas (Lakes, Rivers). The North American Environmental Atlas – Lakes & Rivers datasets display area hydrographic features (Lakes: major lakes and reservoirs; Rivers: major rivers, streams, and canals) of North America at a reference spatial scale of 1:1,000,000. Credits: Commission for Environmental Cooperation (CEC). 2023. "North American Atlas – Lakes and Rivers". Natural Resources Canada (NRCan), Instituto Nacional de Estadística y Geografía (INEGI), Comisión Nacional del Agua (CONAGUA), U.S. Geological Survey (USGS). Ed. 3.0, Vector digital data [1:1,000,000].

The **Lake Winnipeg Community-Based Monitoring Network** (LWCBMN) is a collaborative, long-term phosphorus monitoring program designed to identify localized phosphorus hotspots where action is required to improve Lake Winnipeg water quality. LWCBMN mobilizes citizen volunteers and watershed partners to collect water samples across Manitoba, generating robust water-quality data that is useful to community practitioners, academic researchers, government scientists and policy-makers alike. Focusing research, resources and action in phosphorus hotspots is necessary to reduce phosphorus loading to Lake Winnipeg.

LWCBMN is delivered in partnership with Manitoba's watershed districts, LWF's science advisors, volunteer citizen scientists and Dr. Nora Casson's laboratory at the University of Winnipeg. Thank you to all who make this network possible!

The **Lake Winnipeg Foundation** (LWF) advocates for change and coordinates action to improve the health of Lake Winnipeg. Combining the commitment of our grassroots membership and the expertise of our science advisors, LWF is nationally recognized for our unique capacity to link science and action. Our goal is to ensure policy and practices informed by evidence are implemented and enforced.

### LWF proudly acknowledges the following funders

This project was undertaken with the financial support of the Government of Canada.  
Ce projet a été réalisé avec l'appui financier du gouvernement du Canada.



**Lake Winnipeg Foundation**    

107 - 62 Hargrave St, Winnipeg, MB, R3C 1N1  
Treaty 1 Territory & Homeland of the Métis Nation  
info@lakewinnipegfoundation.org | 204-956-0436